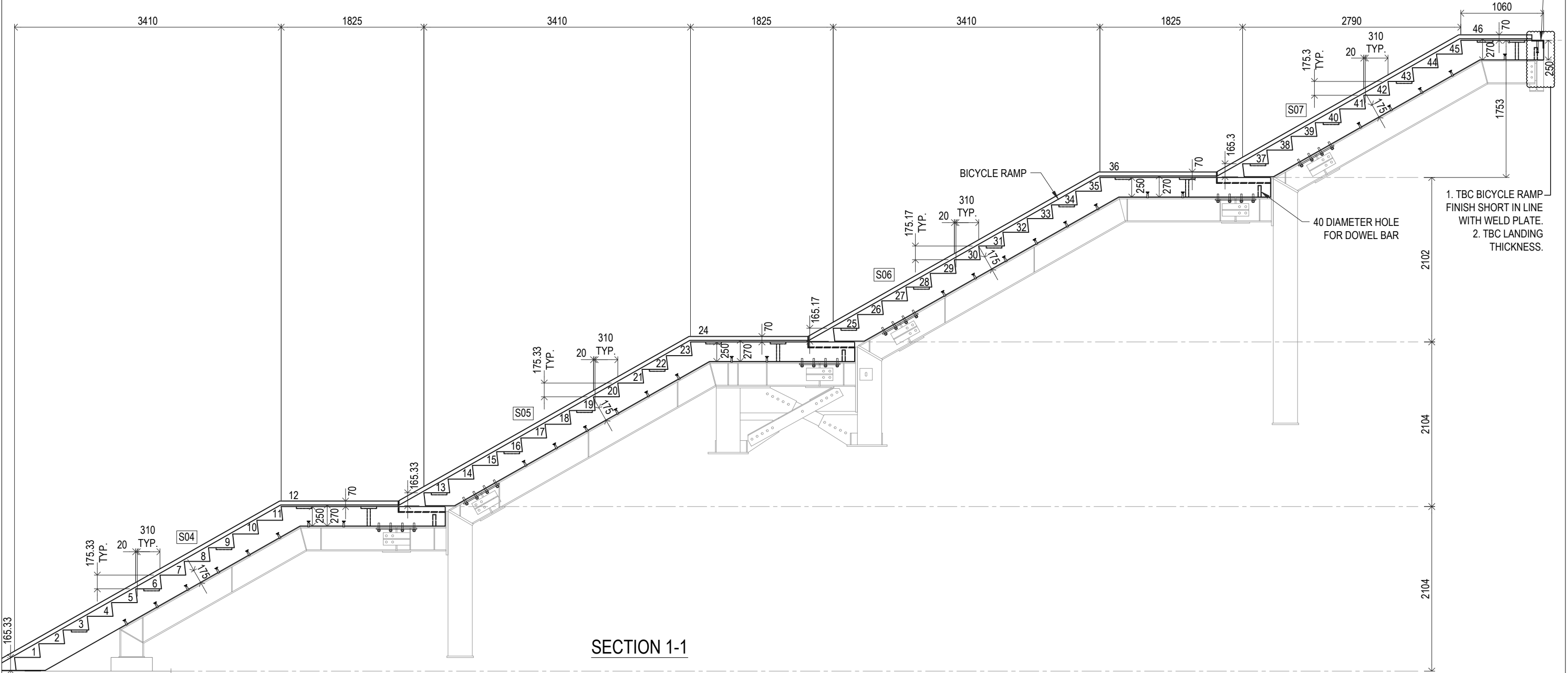


PORTERS AVENUE STAIR PLAN



SECTION 1-1

150x100x10 UA CAST IN FULL LENGTH OF STAIR. PROVIDE 19 SHANK DIAMETER SHEAR STUDS x 150 LONG (GR410) WITH 30mm DIAMETER x 8mm THK HEAD AT 400 CTS.

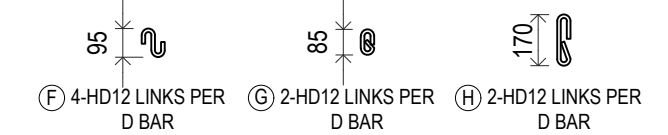
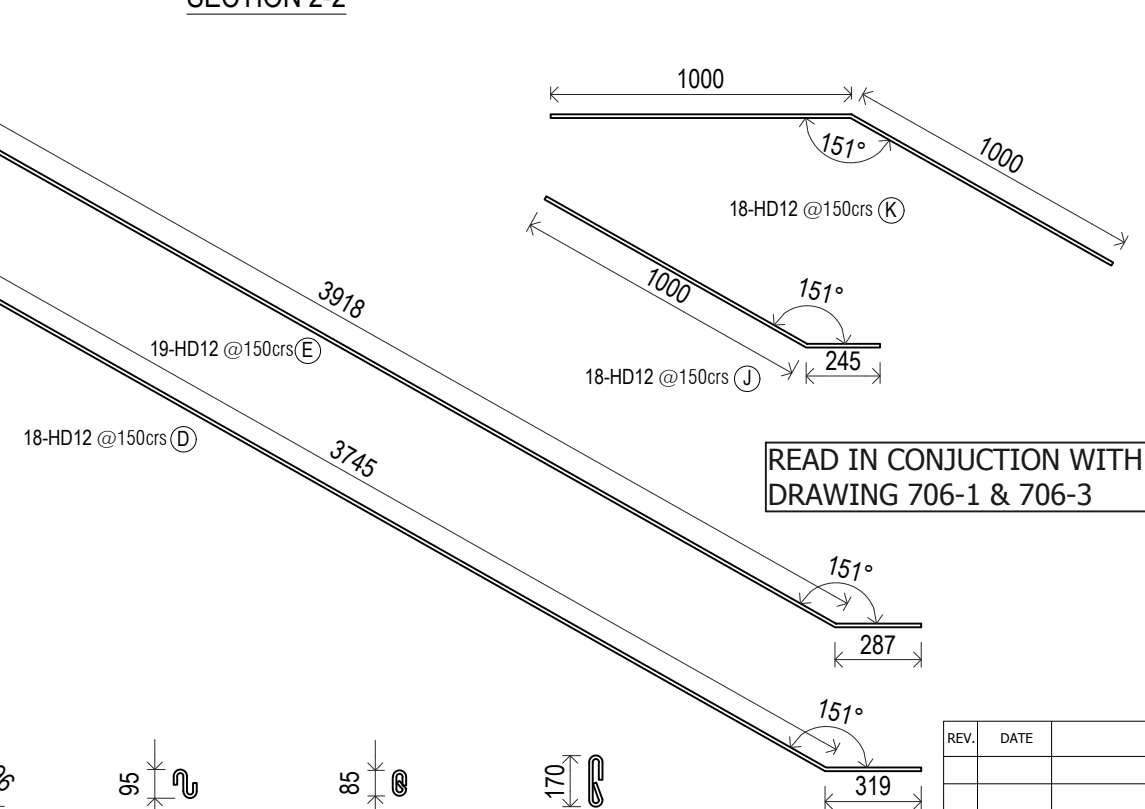
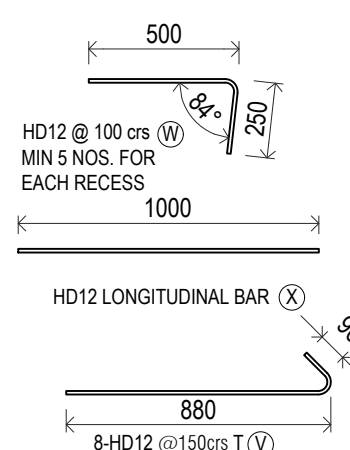
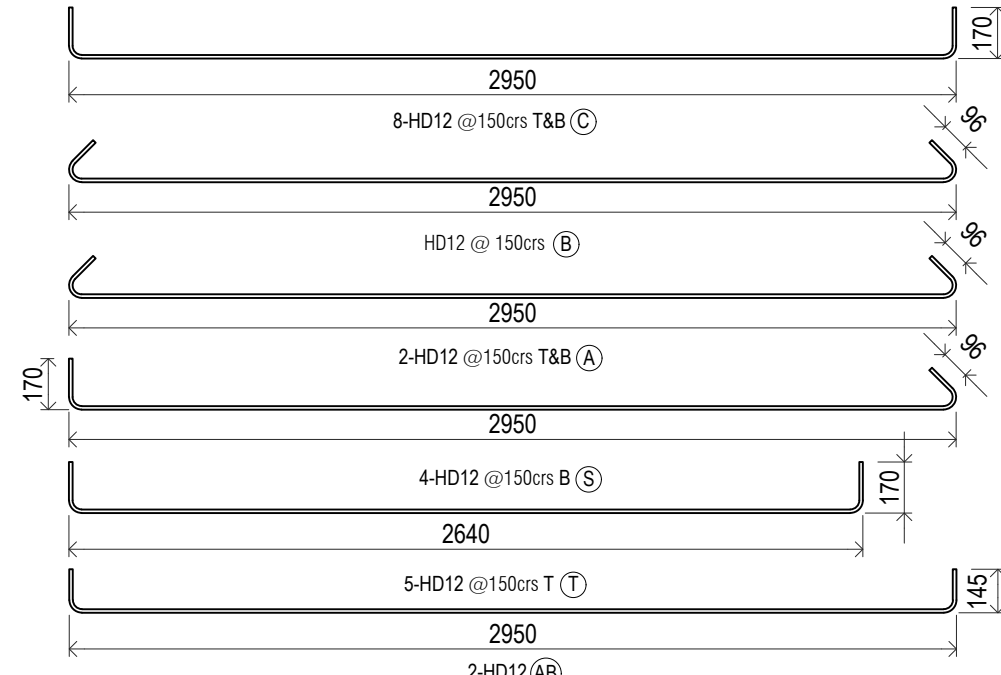
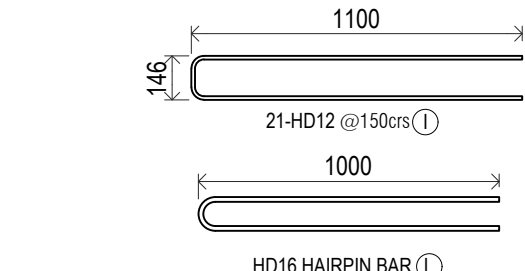
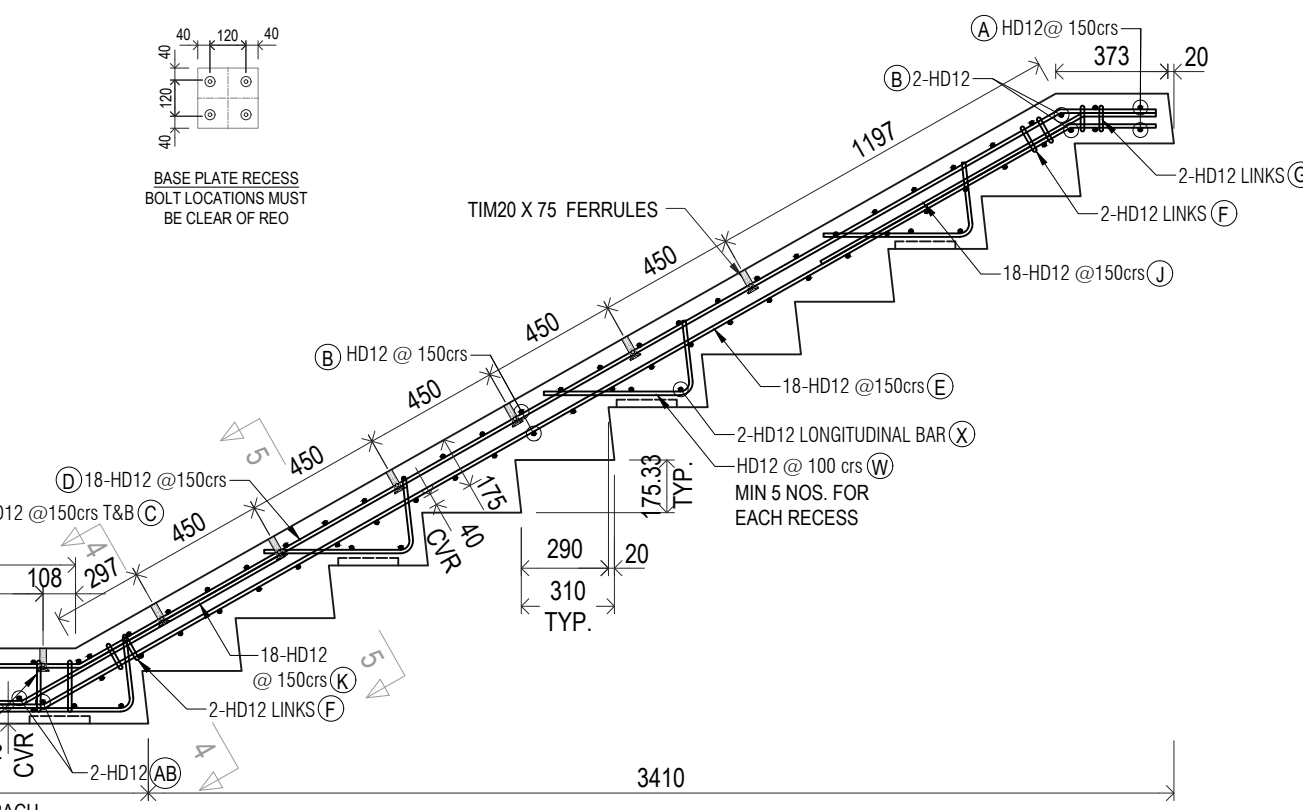
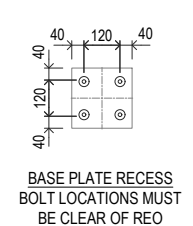
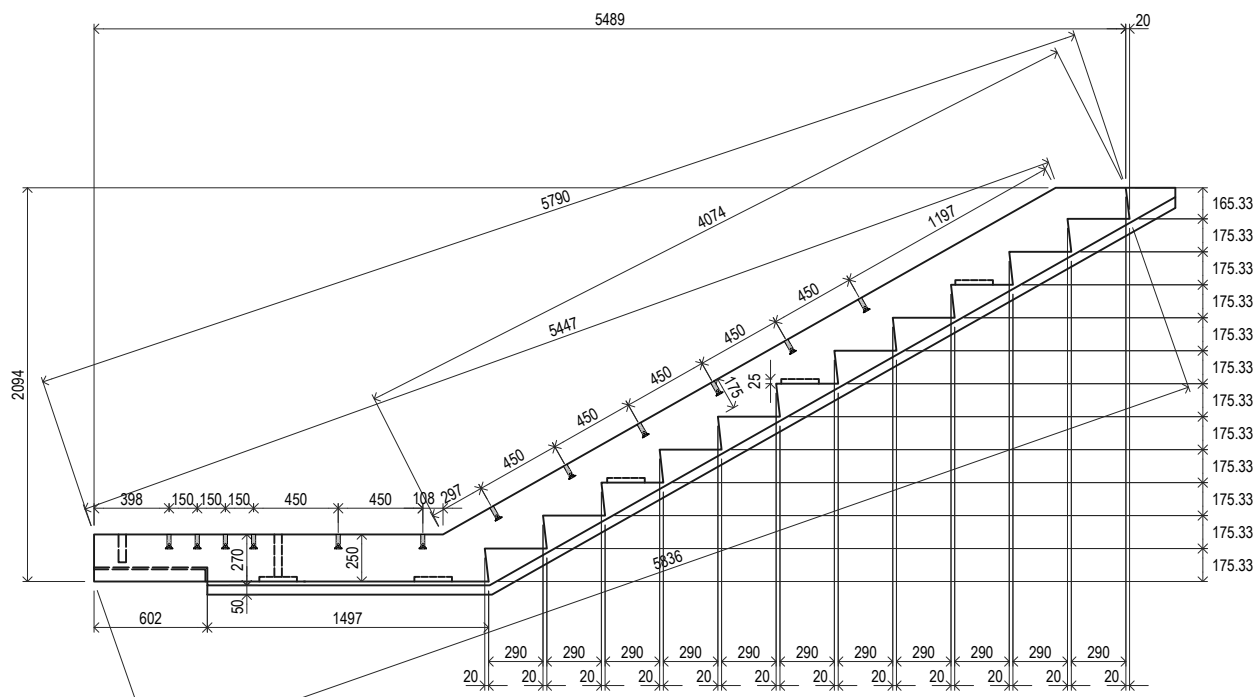
- 1. TBC BICYCLE RAMP FINISH SHORT IN LINE WITH WELD PLATE.
- 2. TBC LANDING THICKNESS.

REV.	DATE	DESCRIPTION	DRAWN	APPROVED

Contractor	Job	Title
		PORTERS AVENUE STAIR PLAN & SECTION

COPYRIGHT RESERVED	Drawn	Date	2022	Job No.	-
	Checked	Scale (A3)	1:75	Dwg No.	REV.

DO NOT SCALE. IF ANY DOUBT ASK



INSPECTION & TEST PLAN	
INSPECTED BY	
NAME OF FABRICATOR	
UNIT NO.	
CAST DATE	
CAST TIME	
CONCRETE DOCKET NO.	
CONCRETE SPECIF. (MPa)	

ITEM	FABRICATOR INITIAL	APPROVED Y / N
MOULD CLEANLINESS		
RELEASE OIL		
DIMENSIONS		
FORMWORK FIXED		
OPENING / REBATES CORRECT & POSITION		
HOLD POINT		
REINFORCING CORRECT		
LAPS & SPLICES CORRECT		
SPACING & COVER CORRECT		
HOLD POINT		
LIFTERS POSITIONED CORRECTLY		
CAST - IN ITEMS		
STARTERS, LACING BARS		
APPROVED FOR CASTING		

POST POUR INSPECTION	
INSPECTED BY	
DATE	

ITEM	APPROVED Y / N
SWIFTLIFTS POSITION	
SWIFTLIFTS RECESS CLEANED	
CAST-IN ITEMS CLEANED	
CONCRETE FINISH	
LABELLED (NUMBER / DATED)	
DAMAGE (CRACKS / CHIPPING)	
CLEANLINESS	

ANY ACTION REQUIRED:

APPROVED FOR DISPATCH

SLING ANGLE TO BE NOT LESS THAN 60° TO HORIZONTAL WHEN LIFTING

40 cvr TO ALL EDGES AND FACES (UNO)

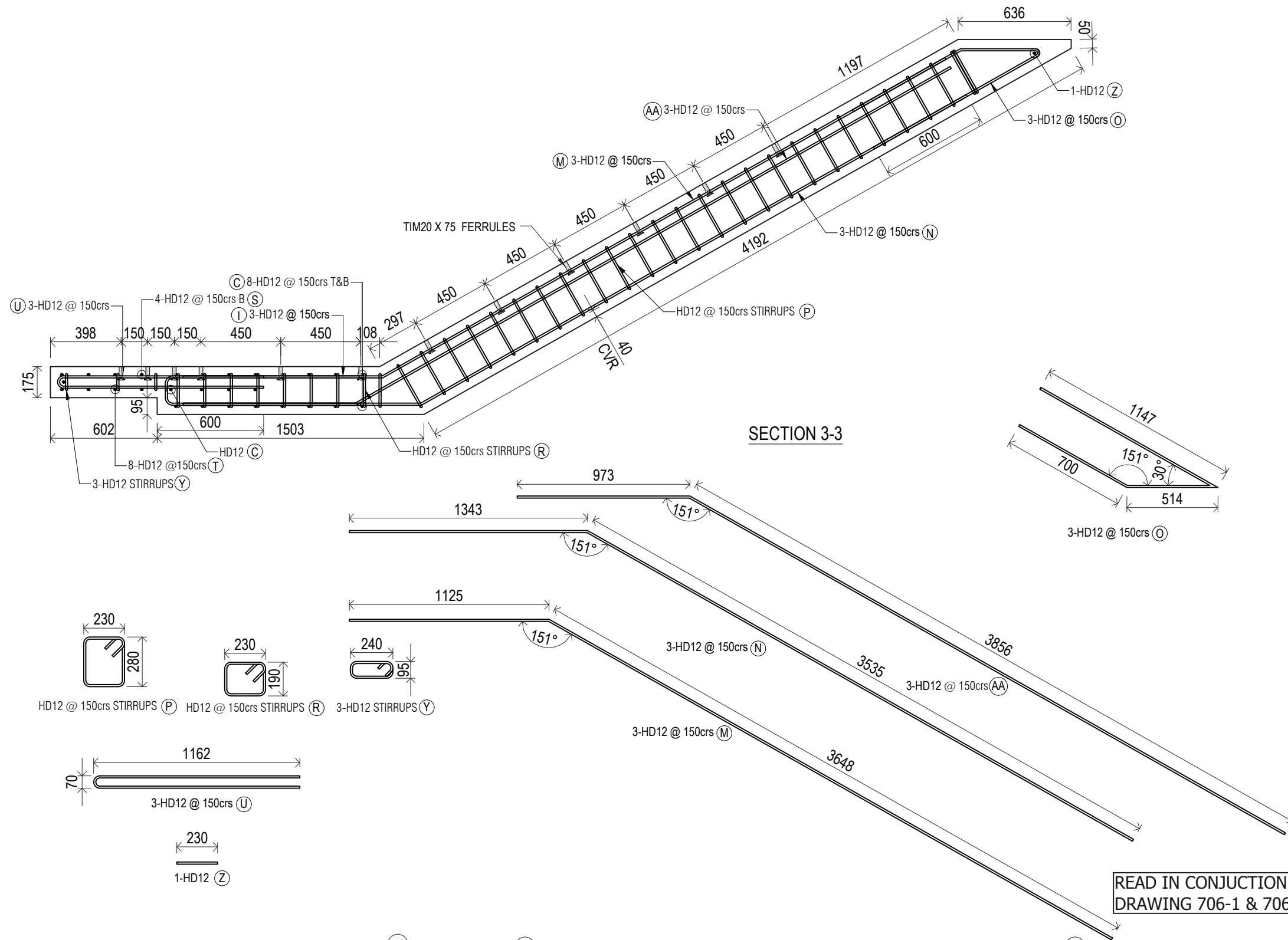
CAST IN SUNDRY
40φ DROSSBACH = 2

AREA (m²)	
VOLUME (m³)	
WEIGHT (t)	
CONC. GRADE	40Mpa
FINISH MF/NF	F5/U3
NO: OFF	3

REV.	DATE	DESCRIPTION	DRAWN	APPROVED

Contractor	Job	Title	Drawn	Date	2022	Job No.	-
		786-S04 SHEET 2 OF 3	Checked	Scale (A3)	1:25	Dwg No.	REV.

COPYRIGHT RESERVED



INSPECTION & TEST PLAN	
INSPECTED BY	
NAME OF FABRICATOR	
UNIT NO.	
CAST DATE	
CAST TIME	
CONCRETE DOCKET NO.	
CONCRETE SPECIF. (MPa)	

ITEM	FABRICATOR INITIAL	APPROVED Y / N
MOULD CLEANLINESS		
RELEASE OIL		
DIMENSIONS		
FORMWORK FIXED		
OPENING / REBATES CORRECT & POSITION		
HOLD POINT		
REINFORCING CORRECT		
LAPS & SPLICES CORRECT		
SPACING & COVER CORRECT		
HOLD POINT		
LIFTERS POSITIONED CORRECTLY		
CAST - IN ITEMS		
STARTERS, LACING BARS		
APPROVED FOR CASTING		

POST POUR INSPECTION	
INSPECTED BY	
DATE	

ITEM	APPROVED Y / N
SWIFTLIFTS POSITION	
SWIFTLIFTS RECESS CLEANED	
CAST-IN ITEMS CLEANED	
CONCRETE FINISH	
LABELED (NUMBER / DATED)	
DAMAGE (CRACKS / CHIPPING)	
CLEANLINESS	

ANY ACTION REQUIRED:

APPROVED FOR DISPATCH

SLING ANGLE TO BE NOT LESS THAN 60° TO HORIZONTAL WHEN LIFTING

40 cvr TO ALL EDGES AND FACES (UNO)

CAST IN SUNDRY

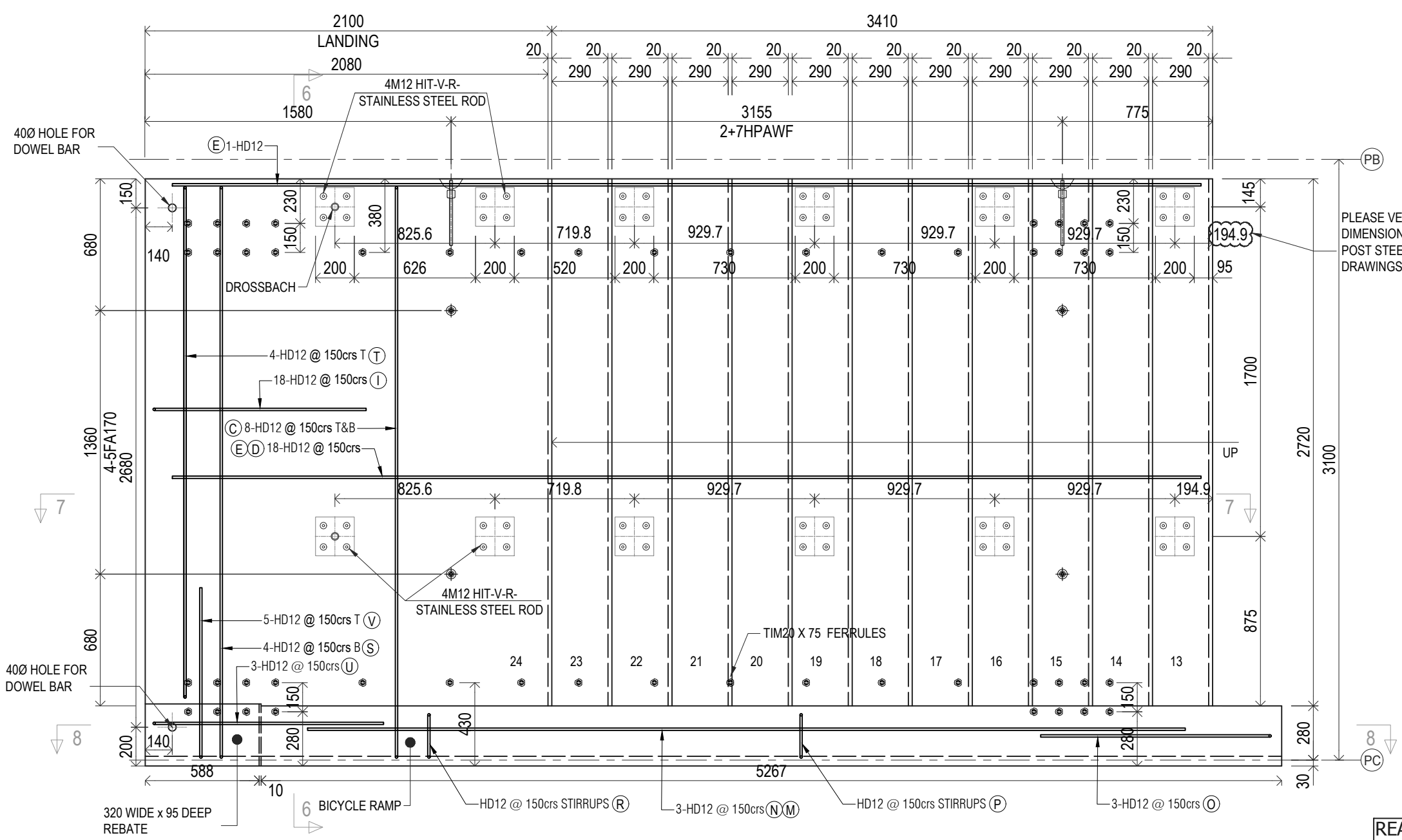
AREA (m ²)	
VOLUME (m ³)	
WEIGHT (t)	
CONC. GRADE	40Mpa
FINISH MF/NF	F5/U3
NO: OFF	3

REV.	DATE	DESCRIPTION	DRAWN	APPROVED

Contractor	Job	Title	786-S04 SHEET 3 OF 3	Drawn	Date	2022	Job No.	-
				Checked	Scale (A3)	1:25	Dwg No.	706-3

COPYRIGHT RESERVED

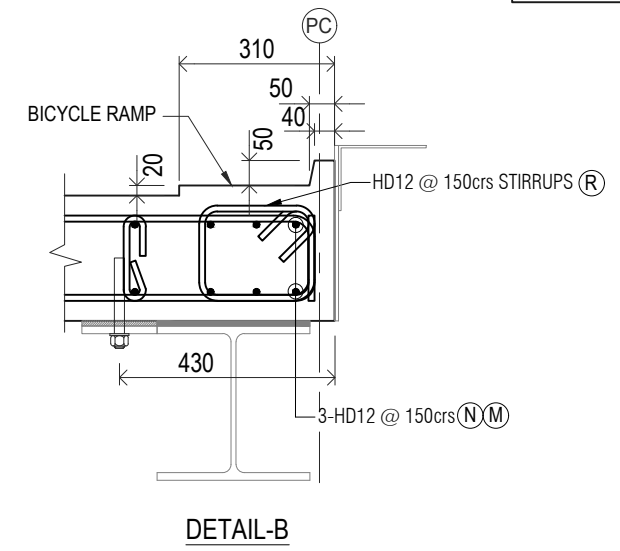
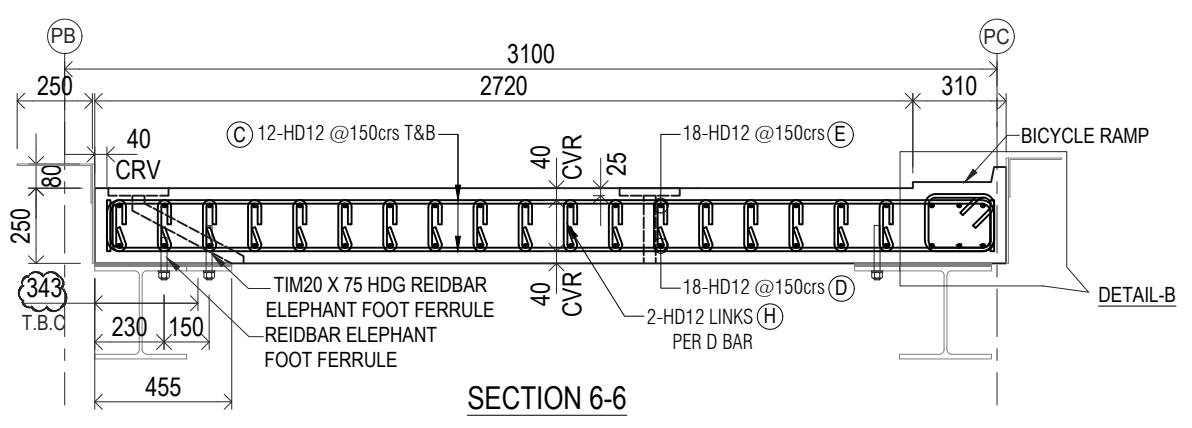
VIEWED FROM
U3



PLEASE VERIFY ALL RECESS DIMENSIONS WITH THE HANDRAIL POST STEEL STRUCTURE SHOP DRAWINGS

S05 LANDING

READ IN CONJUNCTION WITH
DRAWING 707-2 & 707-3



Note: Please verify all ferrules dimensions with the structural steel frame

INSPECTION & TEST PLAN	
INSPECTED BY	
NAME OF FABRICATOR	
UNIT NO.	
CAST DATE	
CAST TIME	
CONCRETE DOCKET NO.	
CONCRETE SPECIF. (MPa)	

ITEM	FABRICATOR INITIAL	APPROVED Y / N
MOULD CLEANLINESS		
RELEASE OIL		
DIMENSIONS		
FORMWORK FIXED		
OPENING / REBATES CORRECT & POSITION		
HOLD POINT		
REINFORCING CORRECT		
LAPS & SPLICES CORRECT		
SPACING & COVER CORRECT		
HOLD POINT		
LIFTERS POSITIONED CORRECTLY		
CAST - IN ITEMS		
STARTERS, LACING BARS		
APPROVED FOR CASTING		

POST POUR INSPECTION	
INSPECTED BY	
DATE	

ITEM	APPROVED Y / N
SWIFTLIFTS POSITION	
SWIFTLIFTS RECESS CLEANED	
CAST-IN ITEMS CLEANED	
CONCRETE FINISH	
LABELLED (NUMBER / DATED)	
DAMAGE (CRACKS / CHIPPING)	
CLEANLINESS	
ANY ACTION REQUIRED:	

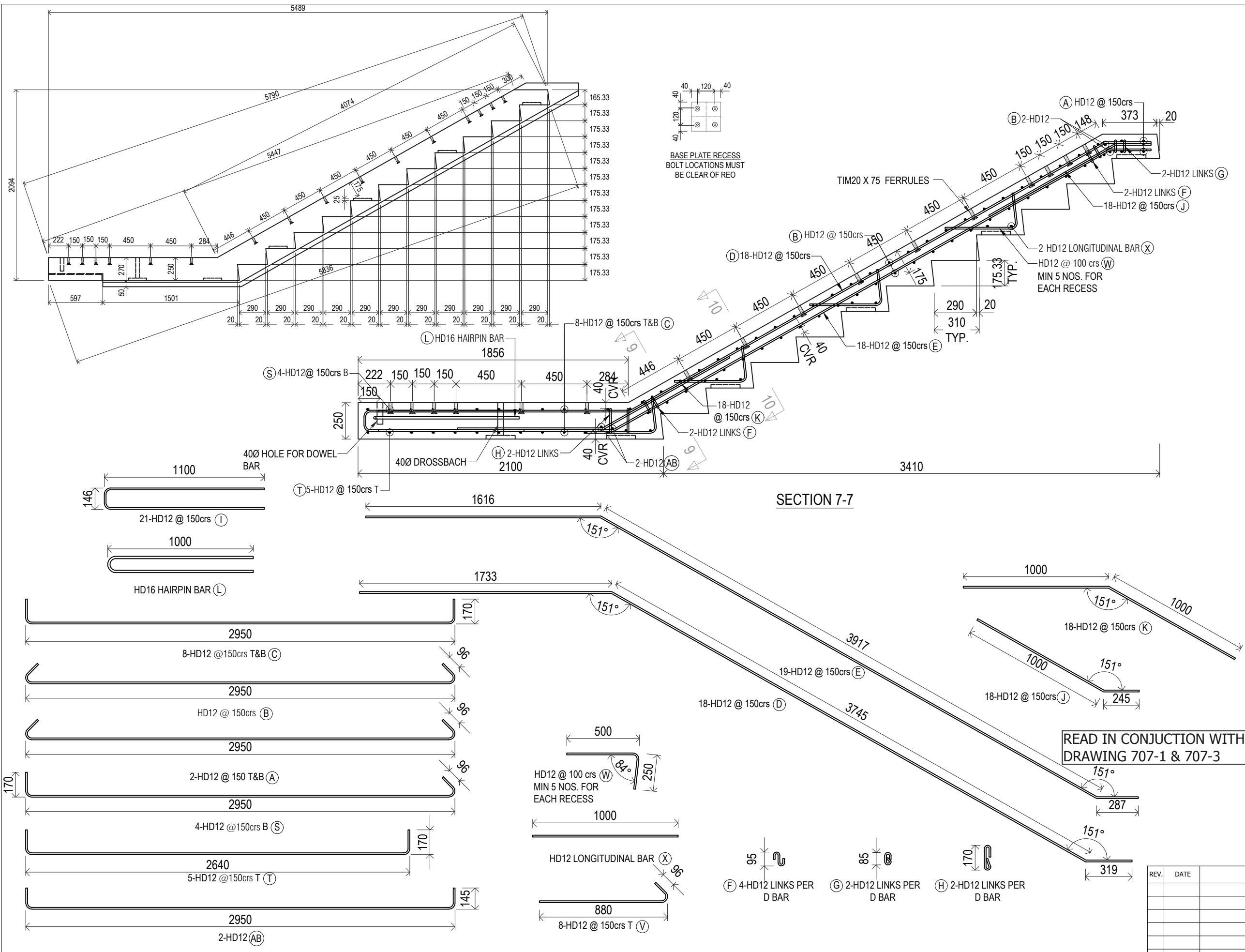
APPROVED FOR DISPATCH	
SLING ANGLE TO BE NOT LESS THAN 60° TO HORIZONTAL WHEN LIFTING	
40 cvr TO ALL EDGES AND FACES (UNO)	
CAST IN SUNDRY	

AREA (m ²)	16.890
VOLUME (m ³)	4.684
WEIGHT (t)	12.178
CONC. GRADE	40Mpa
FINISH MF/NF	F5/U3
NO: OFF	3

REV.	DATE	DESCRIPTION	DRAWN	APPROVED

Contractor	Job	Title	786-S05 SHEET 1 OF 3	Drawn	Date	2022	Job No.	-
				Checked	Scale (A3)	1:25	Dwg No.	707-1

COPYRIGHT RESERVED



INSPECTION & TEST PLAN	
INSPECTED BY	
NAME OF FABRICATOR	
UNIT NO.	
CAST DATE	
CAST TIME	
CONCRETE DOCKET NO.	
CONCRETE SPECIF. (MPa)	

ITEM	FABRICATOR INITIAL	APPROVED Y/N
MOULD CLEANLINESS		
RELEASE OIL		
DIMENSIONS		
FORMWORK FIXED		
OPENING / REBATES CORRECT & POSITION		
HOLD POINT		
REINFORCING CORRECT		
LAPS & SPLICES CORRECT		
SPACING & COVER CORRECT		
HOLD POINT		
LIFTERS POSITIONED CORRECTLY		
CAST - IN ITEMS		
STARTERS, LACING BARS		
APPROVED FOR CASTING		

POST POUR INSPECTION	
INSPECTED BY	
DATE	

ITEM	APPROVED Y/N
SWIFTLIFTS POSITION	
SWIFTLIFTS RECESS CLEANED	
CAST-IN ITEMS CLEANED	
CONCRETE FINISH	
LABELED (NUMBER / DATED)	
DAMAGE (CRACKS / CHIPPING)	
CLEANLINESS	

ANY ACTION REQUIRED:

APPROVED FOR DISPATCH

SLING ANGLE TO BE NOT LESS THAN 60° TO HORIZONTAL WHEN LIFTING

40 cvr TO ALL EDGES AND FACES (UNO)

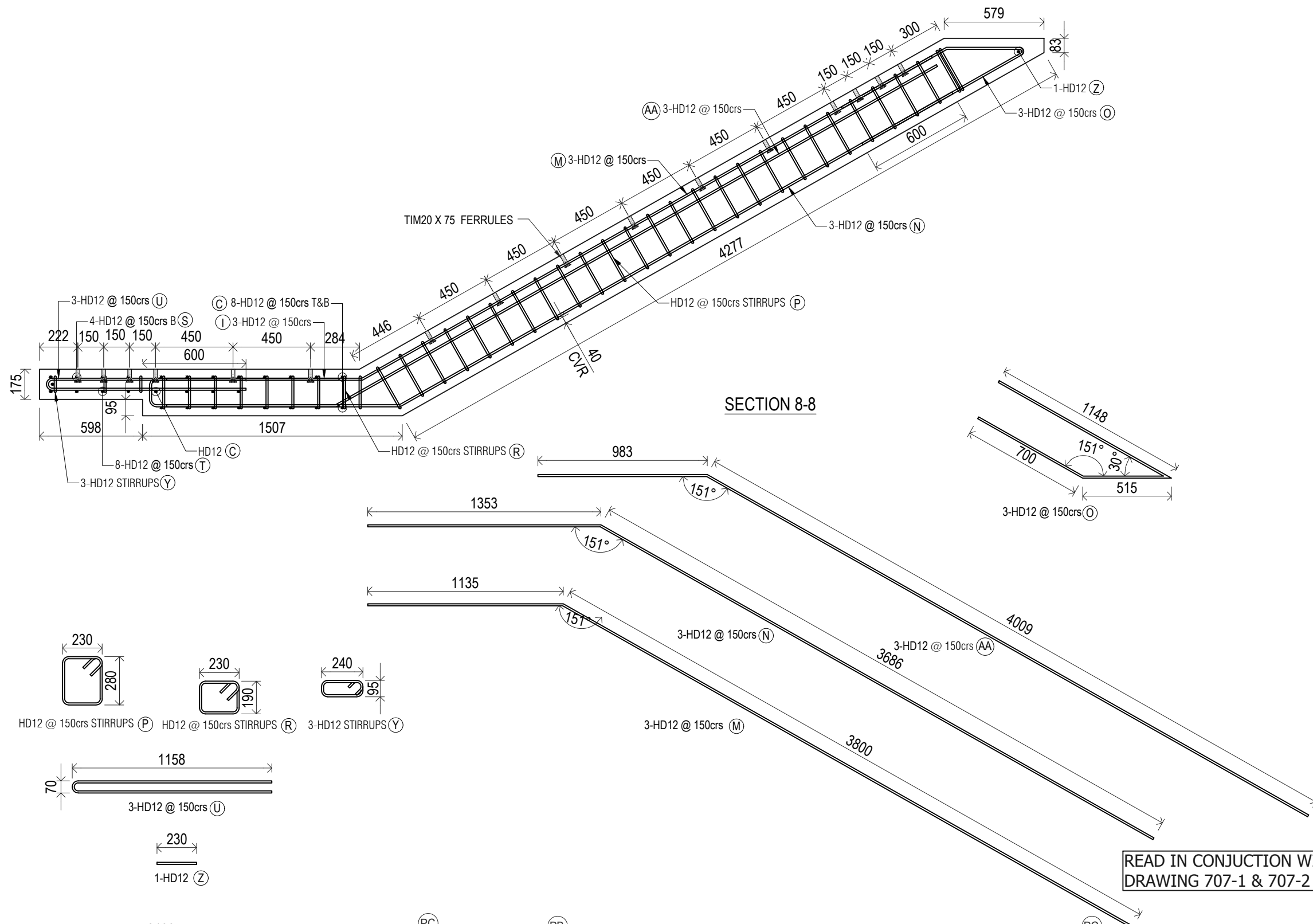
CAST IN SUNDRY
40Ø DROSSBACH = 2

AREA (m²)	
VOLUME (m³)	
WEIGHT (t)	
CONC. GRADE	40Mpa
FINISH MF/NF	F5/U3
NO: OFF	3

REV.	DATE	DESCRIPTION	DRAWN	APPROVED

Contractor	Job	Title	786-S05 SHEET 2 OF 3	Drawn	Date	2022	Job No.	-
				Checked	Scale (A3)	1:25	Dwg No.	707-2

COPYRIGHT RESERVED



INSPECTION & TEST PLAN		
INSPECTED BY		
NAME OF FABRICATOR		
UNIT NO.		
CAST DATE		
CAST TIME		
CONCRETE DOCKET NO.		
CONCRETE SPECIF. (MPa)		

ITEM	FABRICATOR INITIAL	APPROVED Y / N
MOULD CLEANLINESS		
RELEASE OIL		
DIMENSIONS		
FORMWORK FIXED		
OPENING / REBATES CORRECT & POSITION		
HOLD POINT		
REINFORCING CORRECT		
LAPS & SPLICES CORRECT		
SPACING & COVER CORRECT		
HOLD POINT		
LIFTERS POSITIONED CORRECTLY		
CAST - IN ITEMS		
STARTERS, LACING BARS		
APPROVED FOR CASTING		

POST POUR INSPECTION		
INSPECTED BY		
DATE		

ITEM	APPROVED Y / N
SWIFTLIFTS POSITION	
SWIFTLIFTS RECESS CLEANED	
CAST-IN ITEMS CLEANED	
CONCRETE FINISH	
LABELLED (NUMBER / DATED)	
DAMAGE (CRACKS / CHIPPING)	
CLEANLINESS	
ANY ACTION REQUIRED:	

APPROVED FOR DISPATCH	
SLING ANGLE TO BE NOT LESS THAN 60° TO HORIZONTAL WHEN LIFTING	
40 cvr TO ALL EDGES AND FACES (UNO)	

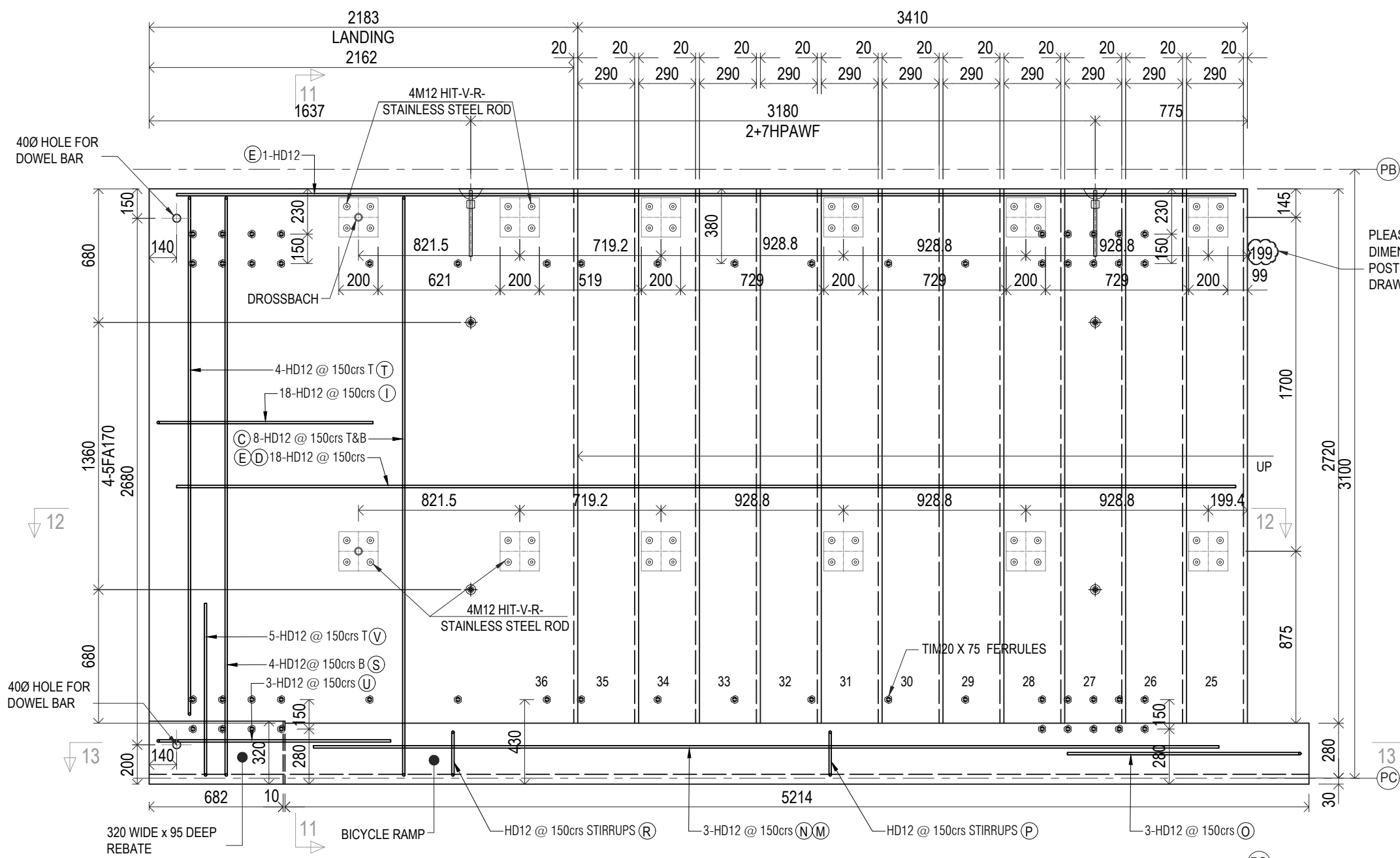
CAST IN SUNDRY	
AREA (m²)	
VOLUME (m³)	
WEIGHT (t)	
CONC. GRADE	40Mpa
FINISH MF/NF	F5/U3
NO: OFF	3

REV.	DATE	DESCRIPTION	DRAWN	APPROVED

Contractor	Job	Title	786-S05 SHEET 3 OF 3	Drawn	Date	2022	Job No.	-
				Checked	Scale (A3)	1:25	Dwg No.	707-3

COPYRIGHT RESERVED

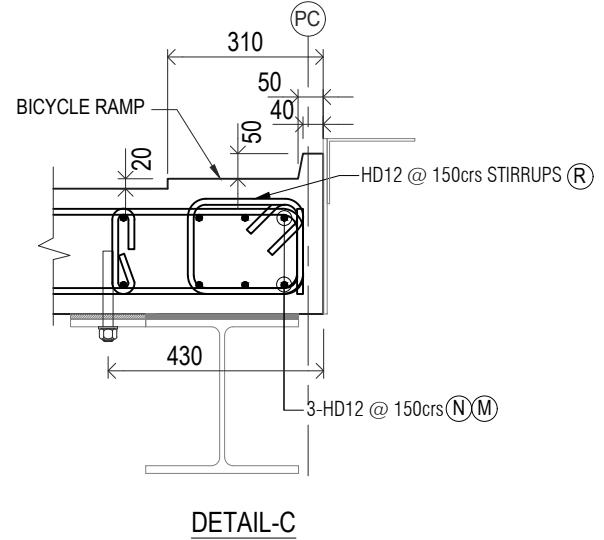
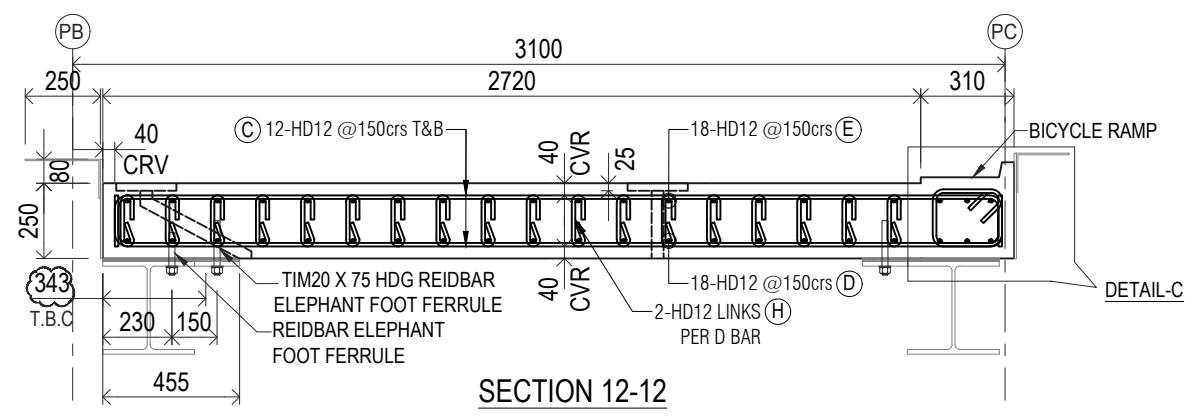
VIEWED FROM
U3



PLEASE VERIFY ALL RECESS DIMENSIONS WITH THE HANDRAIL POST STEEL STRUCTURE SHOP DRAWINGS

READ IN CONJUNCTION WITH DRAWING 708-2 & 708-3

S06 LANDING



Note: Please verify all ferrules dimensions with the structural steel frame

INSPECTION & TEST PLAN	
INSPECTED BY	
NAME OF FABRICATOR	
UNIT NO.	
CAST DATE	
CAST TIME	
CONCRETE DOCKET NO.	
CONCRETE SPECIF. (MPa)	

ITEM	FABRICATOR INITIAL	APPROVED Y / N
MOULD CLEANLINESS		
RELEASE OIL		
DIMENSIONS		
FORMWORK FIXED		
OPENING / REBATES CORRECT & POSITION		
HOLD POINT		
REINFORCING CORRECT		
LAPS & SPLICES CORRECT		
SPACING & COVER CORRECT		
HOLD POINT		
LIFTERS POSITIONED CORRECTLY		
CAST - IN ITEMS		
STARTERS, LACING BARS		
APPROVED FOR CASTING		

POST POUR INSPECTION	
INSPECTED BY	
DATE	

ITEM	APPROVED Y / N
SWIFTLIFTS POSITION	
SWIFTLIFTS RECESS CLEANED	
CAST-IN ITEMS CLEANED	
CONCRETE FINISH	
LABELED (NUMBER / DATED)	
DAMAGE (CRACKS / CHIPPING)	
CLEANLINESS	
ANY ACTION REQUIRED:	
APPROVED FOR DISPATCH	

SLING ANGLE TO BE NOT LESS THAN 60° TO HORIZONTAL WHEN LIFTING

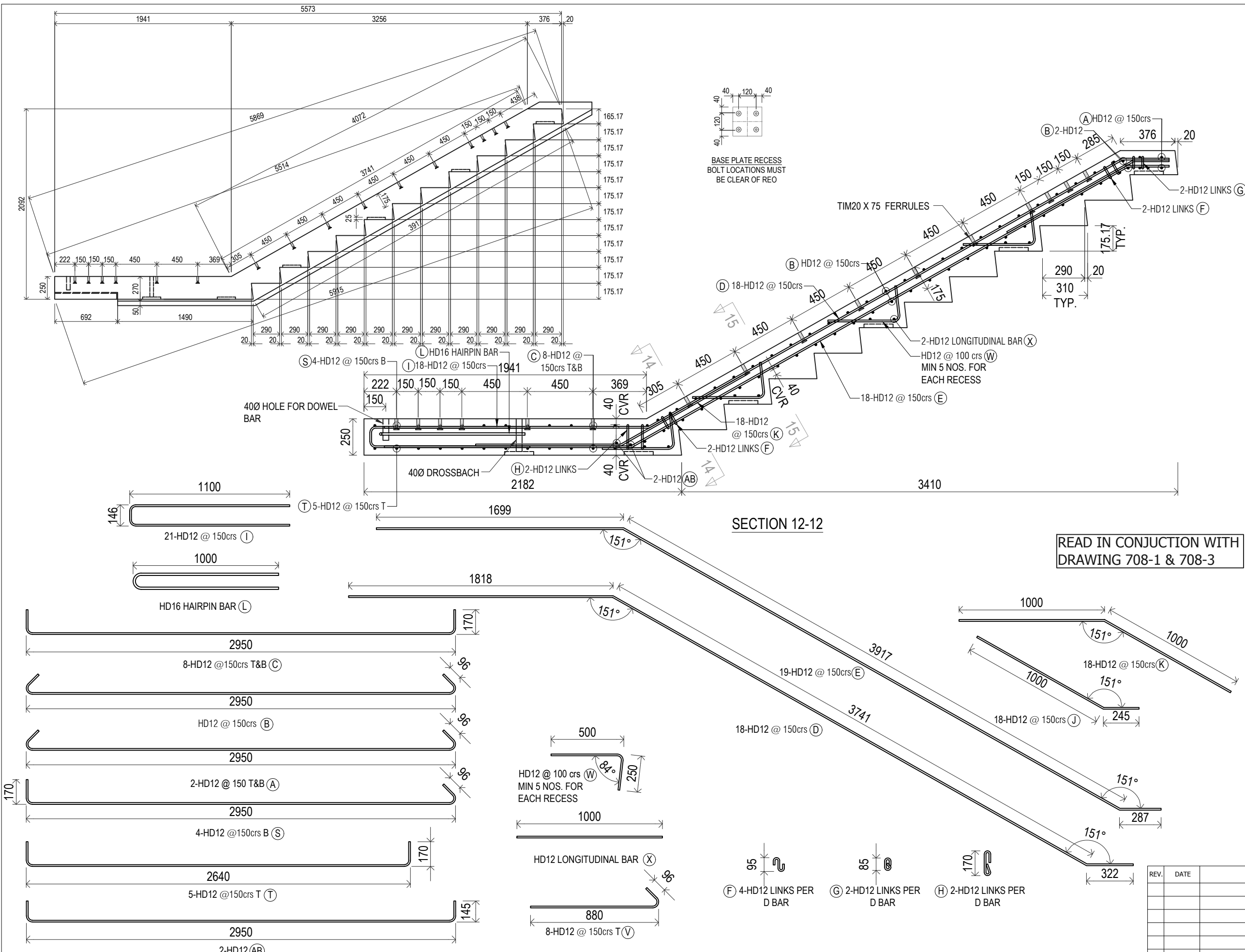
40 cvr TO ALL EDGES AND FACES (UNO)

CAST IN SUNDRY

AREA (m ²)	17.182
VOLUME (m ³)	4.746
WEIGHT (t)	12.340
CONC. GRADE	40Mpa
FINISH MF/NF	F5/U3
NO: OFF	3

REV.	DATE	DESCRIPTION	DRAWN	APPROVED

Contractor	Job	Title	786-S6 SHEET 1 OF 3	COPYRIGHT RESERVED	Drawn	Date	2022	Job No.	-
					Checked	Scale (A3)	1:25	Dwg No.	708-1



INSPECTION & TEST PLAN		
INSPECTED BY		
NAME OF FABRICATOR		
UNIT NO.		
CAST DATE		
CAST TIME		
CONCRETE DOCKET NO.		
CONCRETE SPECIF. (MPa)		

ITEM	FABRICATOR INITIAL	APPROVED Y / N
MOULD CLEANLINESS		
RELEASE OIL		
DIMENSIONS		
FORMWORK FIXED		
OPENING / REBATES CORRECT & POSITION		
HOLD POINT		
REINFORCING CORRECT		
LAPS & SPLICES CORRECT		
SPACING & COVER CORRECT		
HOLD POINT		
LIFTERS POSITIONED CORRECTLY		
CAST - IN ITEMS		
STARTERS, LACING BARS		
APPROVED FOR CASTING		

POST POUR INSPECTION	
INSPECTED BY	
DATE	
ITEM	APPROVED Y / N
SWIFTLIFTS POSITION	
SWIFTLIFTS RECESS CLEANED	
CAST-IN ITEMS CLEANED	
CONCRETE FINISH	
LABELLED (NUMBER / DATED)	
DAMAGE (CRACKS / CHIPPING)	
CLEANLINESS	

ANY ACTION REQUIRED:

APPROVED FOR DISPATCH

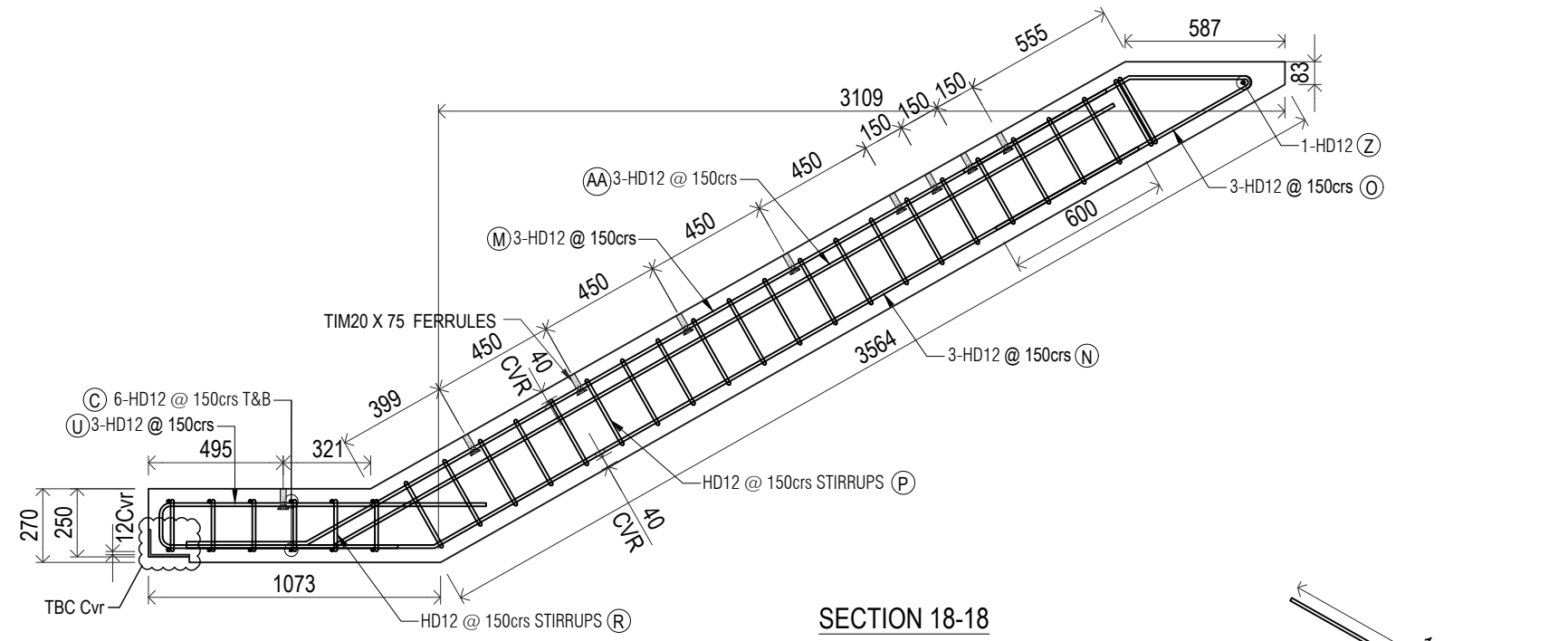
SLING ANGLE TO BE NOT LESS THAN 60° TO HORIZONTAL WHEN LIFTING

40 cvr TO ALL EDGES AND FACES (UNO)

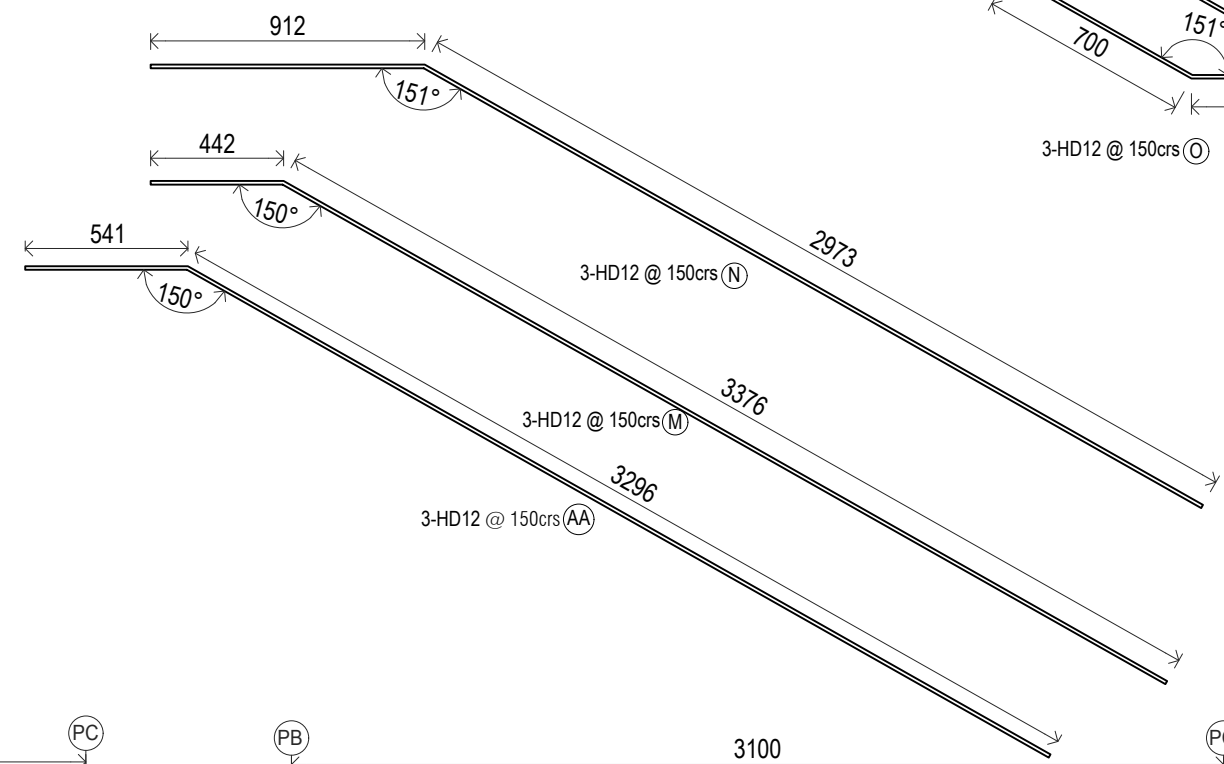
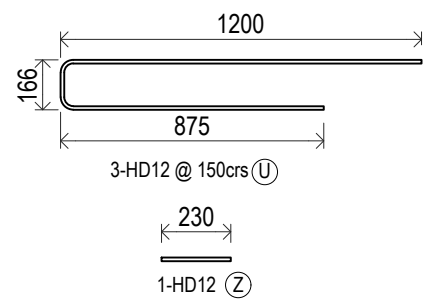
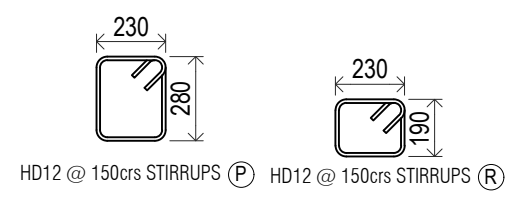
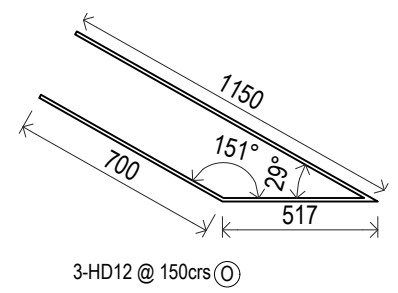
CAST IN SUNDRY
40Ø DROSSBACH = 2

AREA (m ²)	
VOLUME (m ³)	
WEIGHT (t)	
CONC. GRADE	40Mpa
FINISH MF/NF	F5/U3
NO: OFF	3

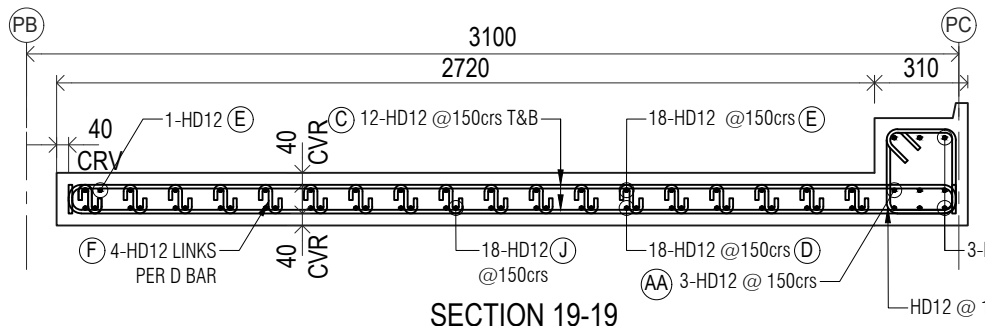
REV.	DATE	DESCRIPTION	DRAWN	APPROVED



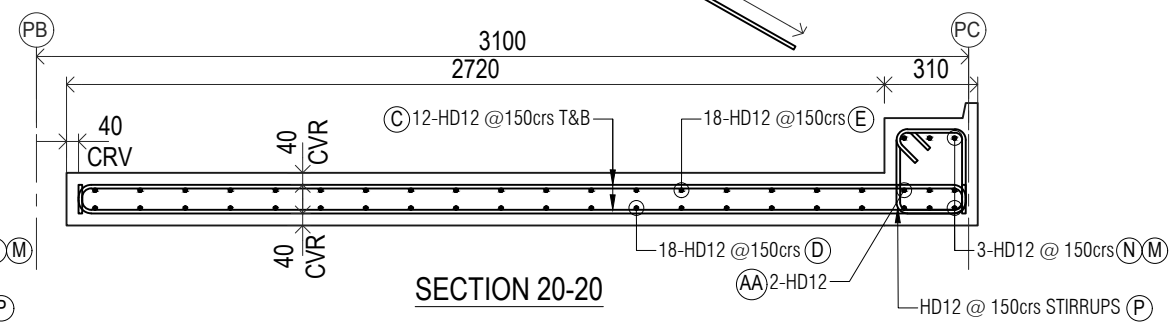
SECTION 18-18



READ IN CONJUNCTION WITH DRAWING 709-1 & 709-2



SECTION 19-19



SECTION 20-20

INSPECTION & TEST PLAN	
INSPECTED BY	
NAME OF FABRICATOR	
UNIT NO.	
CAST DATE	
CAST TIME	
CONCRETE DOCKET NO.	
CONCRETE SPECIF. (MPa)	

ITEM	FABRICATOR INITIAL	APPROVED Y / N
MOULD CLEANLINESS		
RELEASE OIL		
DIMENSIONS		
FORMWORK FIXED		
OPENING / REBATES CORRECT & POSITION		
HOLD POINT		
REINFORCING CORRECT		
LAPS & SPLICES CORRECT		
SPACING & COVER CORRECT		
HOLD POINT		
LIFTERS POSITIONED CORRECTLY		
CAST - IN ITEMS		
STARTERS, LACING BARS		
APPROVED FOR CASTING		

POST POUR INSPECTION	
INSPECTED BY	
DATE	

ITEM	APPROVED Y / N
SWIFTLIFTS POSITION	
SWIFTLIFTS RECESS CLEANED	
CAST-IN ITEMS CLEANED	
CONCRETE FINISH	
LABELED (NUMBER / DATED)	
DAMAGE (CRACKS / CHIPPING)	
CLEANLINESS	
ANY ACTION REQUIRED:	

APPROVED FOR DISPATCH

SLING ANGLE TO BE NOT LESS THAN 60° TO HORIZONTAL WHEN LIFTING

40 cvr TO ALL EDGES AND FACES (UNO)

CAST IN SUNDRY

AREA (m ²)	
VOLUME (m ³)	
WEIGHT (t)	
CONC. GRADE	40Mpa
FINISH MF/NF	F5/U3
NO: OFF	3

REV.	DATE	DESCRIPTION	DRAWN	APPROVED

Contractor	Job	Title	Drawn	Date	2022	Job No.	-
		786-S07 SHEET 3 OF 3	Checked	Scale (A3)	1:25	Dwg No.	709-3

COPYRIGHT RESERVED

REV.