

3D VIEW  
PURLIN NOT SHOWN FOR CLARITY

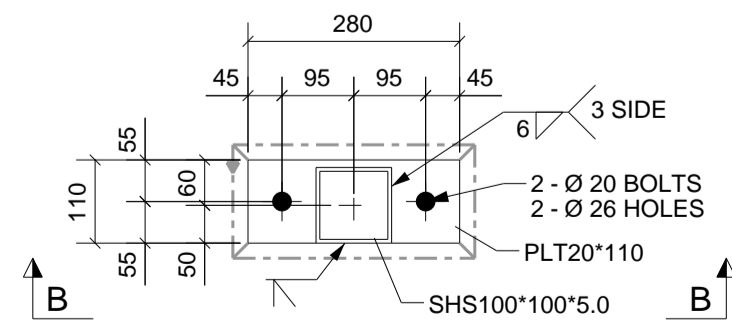
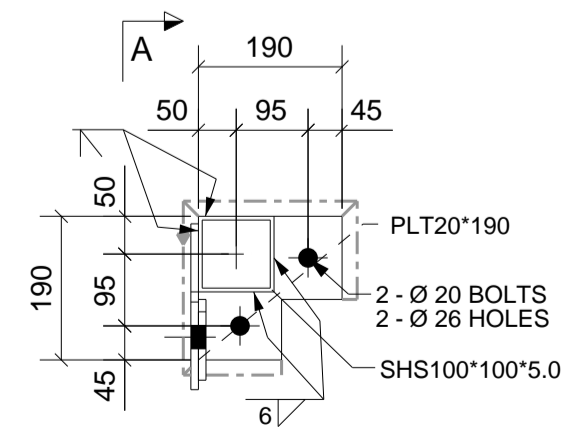
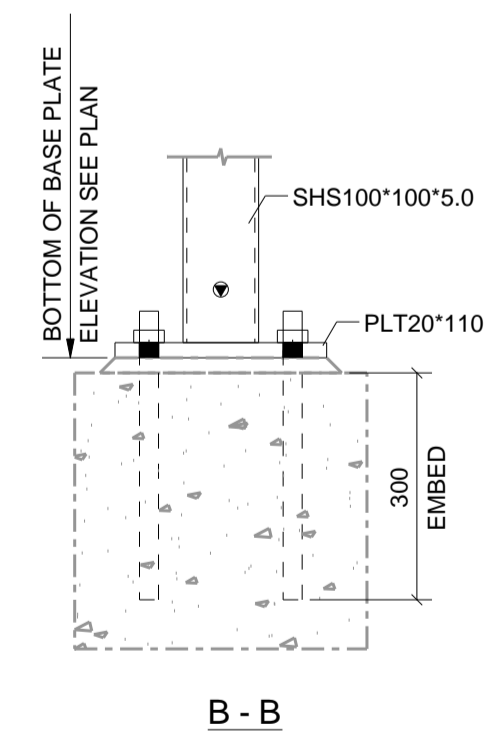
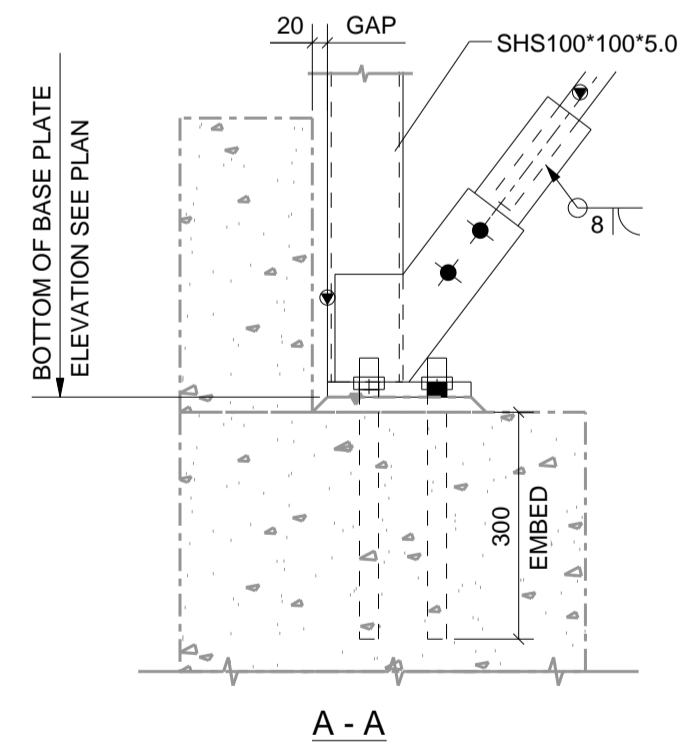
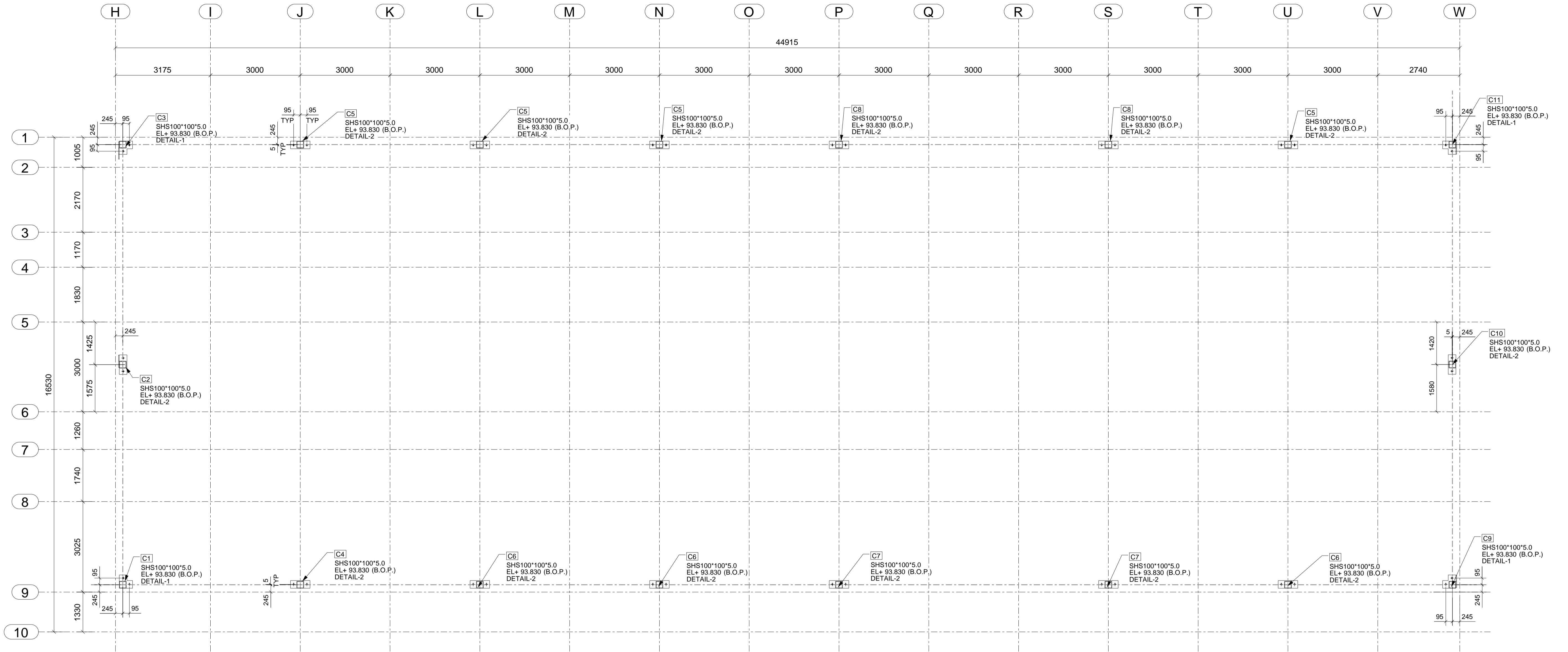
3D VIEW  
ROOF BRACING NOT SHOWN FOR CLARITY

REV	NAME	DATE	DESCRIPTION
0	STP	08/10/19	ISSUED FOR FABRICATION

DRAWING TITLE: PLAN AT RL	ISSUE DATE: 08.10.2019	APPROVAL SENT: 08.10.2019
CONTRACT:	CHECKED DATE: 08.10.2019	APPROVAL DATE: 08.10.2019
MODELLED BY: BUILD CREATED: 08.10.2019	CHECKED BY: SP	APPROVED BY:
SCALE: 1:100	PROJECT No.	DRAWING No. <b>E8</b>
		REV. <b>0</b>

Erection Notes





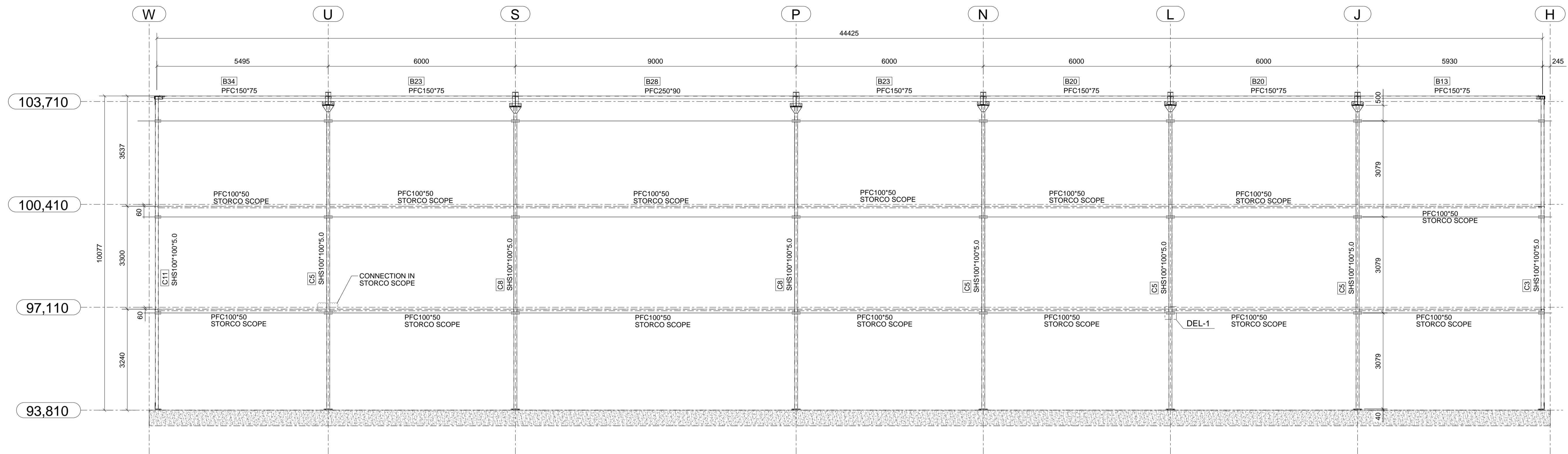
DETAIL - 1

DETAIL - 2

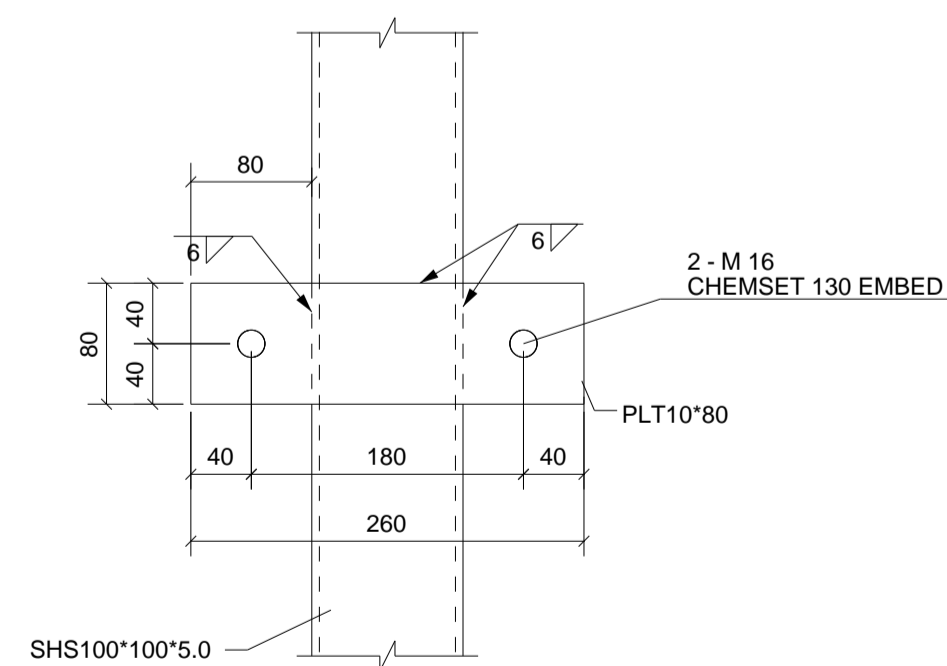
Erection Notes

REV	NAME	DATE	DESCRIPTION
0	STP	08/10/19	ISSUED FOR FABRICATION

DRAWING TITLE:	ANCHOR BOLT LAYOUT	ISSUE DATE:	04.10.2019	APPROVAL SENT:	08.10.2019
CONTRACT:		CHECKED DATE:	08.10.2019	APPROVAL DATE:	08.10.2019
MODELLED BY:	BUILD CREATED: 14.09.2019	CHECKED BY:	SP	APPROVED BY:	
SCALE:	1:10	PROJECT No.		DRAWING No.	E1
					0



STEEL FRAMING NORTH ELEVATION (AT GRID 1)

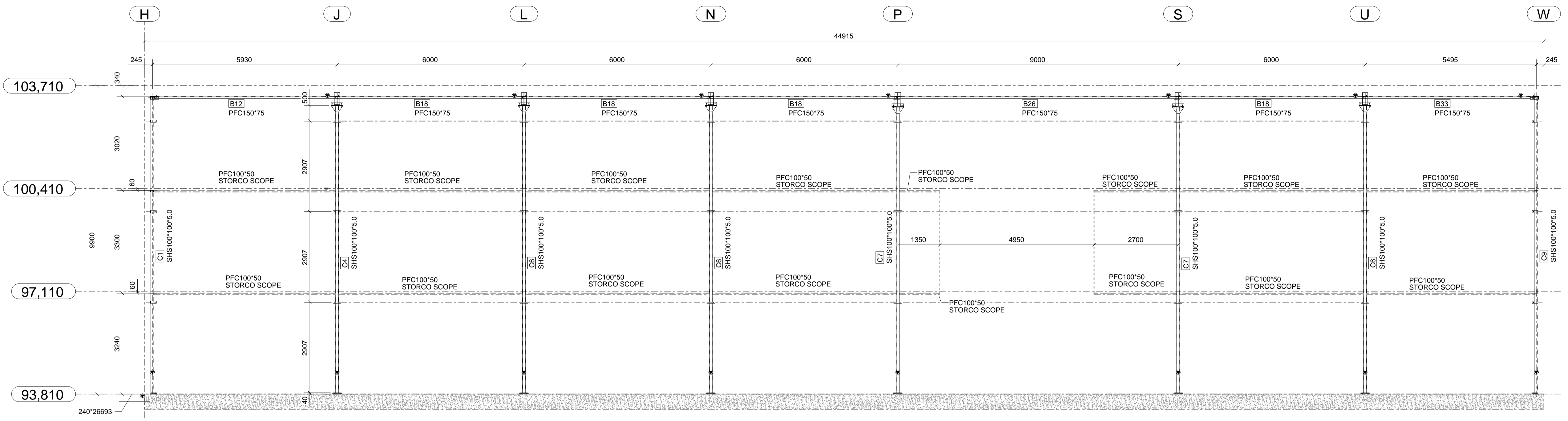


DETAIL - 1

Erection Notes			
REV	NAME	DATE	DESCRIPTION
0	STP	08/10/19	ISSUED FOR FABRICATION

DRAWING TITLE: STEEL FRAMING ELEVATION AT GRID - 1	ISSUE DATE: 04.10.2019	APPROVAL SENT: 08.10.2019
CONTRACT:	CHECKED DATE: 08.10.2019	APPROVAL DATE: 08.10.2019
MODELLED BY:	BUILD CREATED: 14.09.2019	CHECKED BY: SP
SCALE: 1:5	PROJECT No.	DRAWING No. E2
		REV. 0

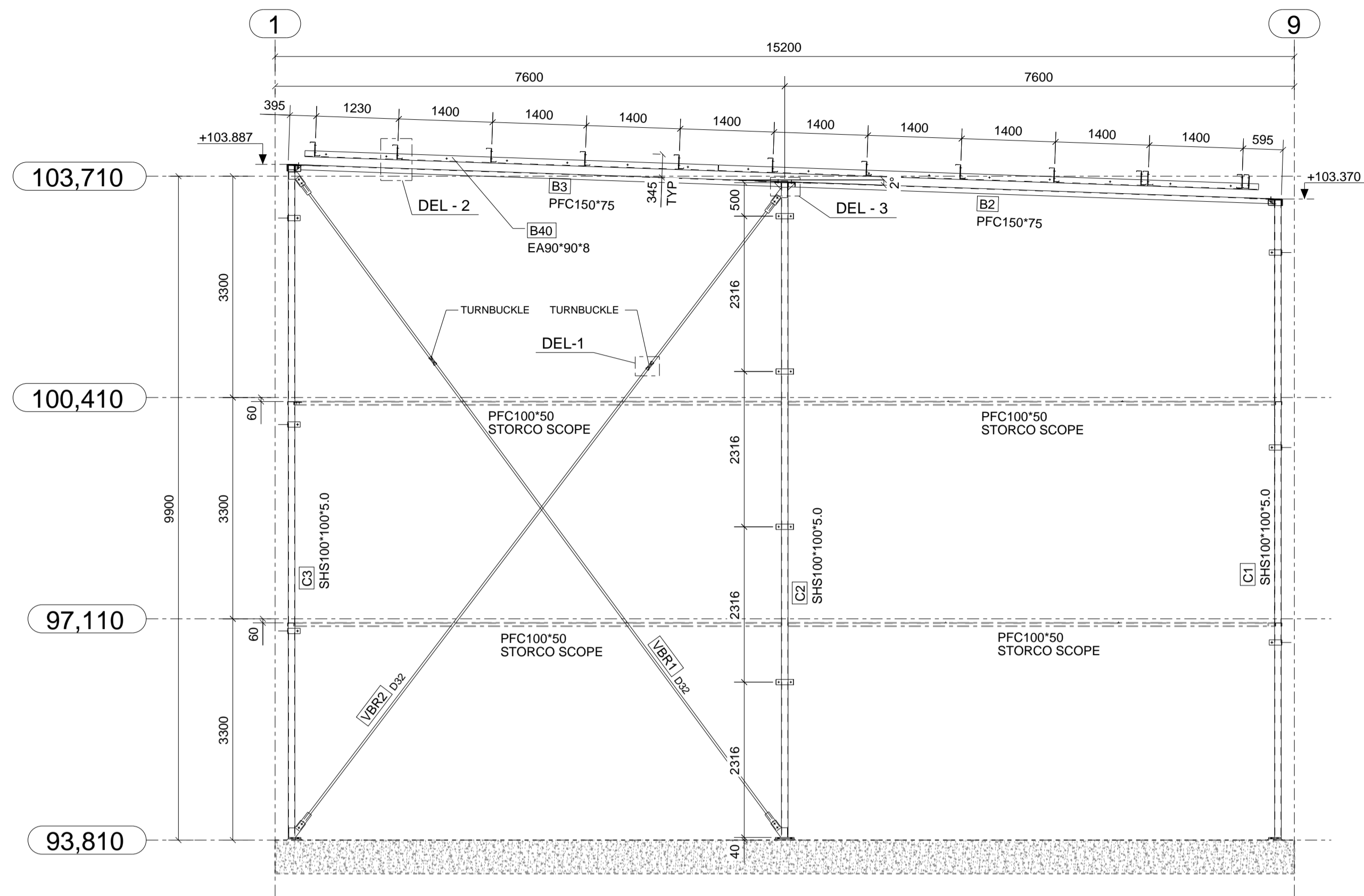


STEEL FRAMING SOUTH ELEVATION (AT GRID 9)

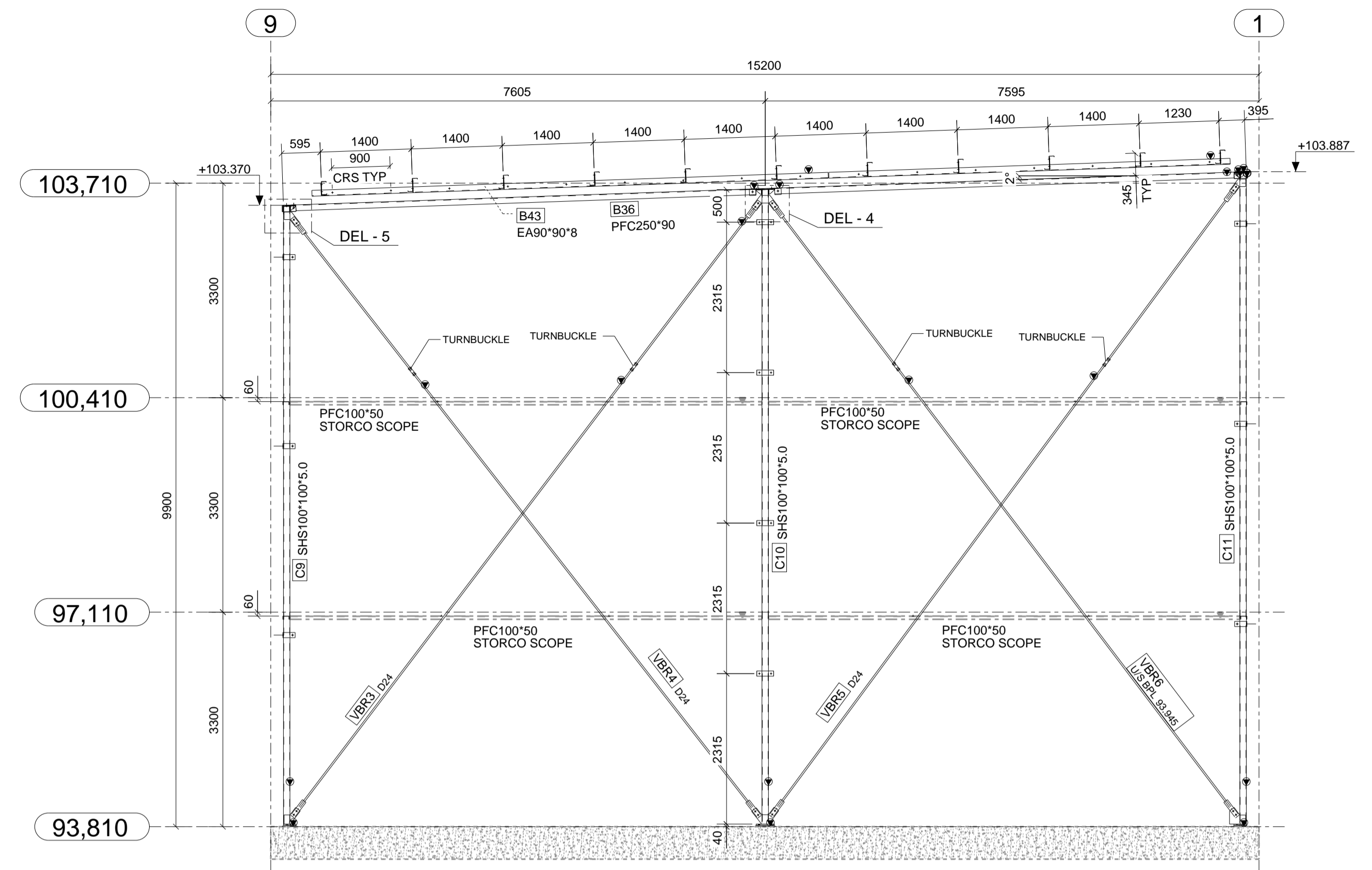
Erection Notes			
REV	NAME	DATE	DESCRIPTION
0	STP	08/10/19	ISSUED FOR FABRICATION

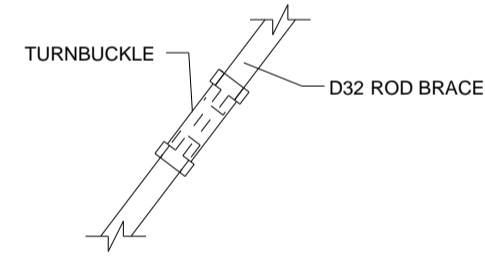
DRAWING TITLE: STEEL FRAMING ELEVATION AT GRID - 9	ISSUE DATE: 04.10.2019	APPROVAL SENT: 08.10.2019
CONTRACT:	CHECKED DATE: 08.10.2019	APPROVAL DATE: 08.10.2019
MODELLED BY:	BUILD CREATED: 14.09.2019	CHECKED BY: SP
SCALE: 1:70	PROJECT No.	DRAWING No. E3
		REV. 0



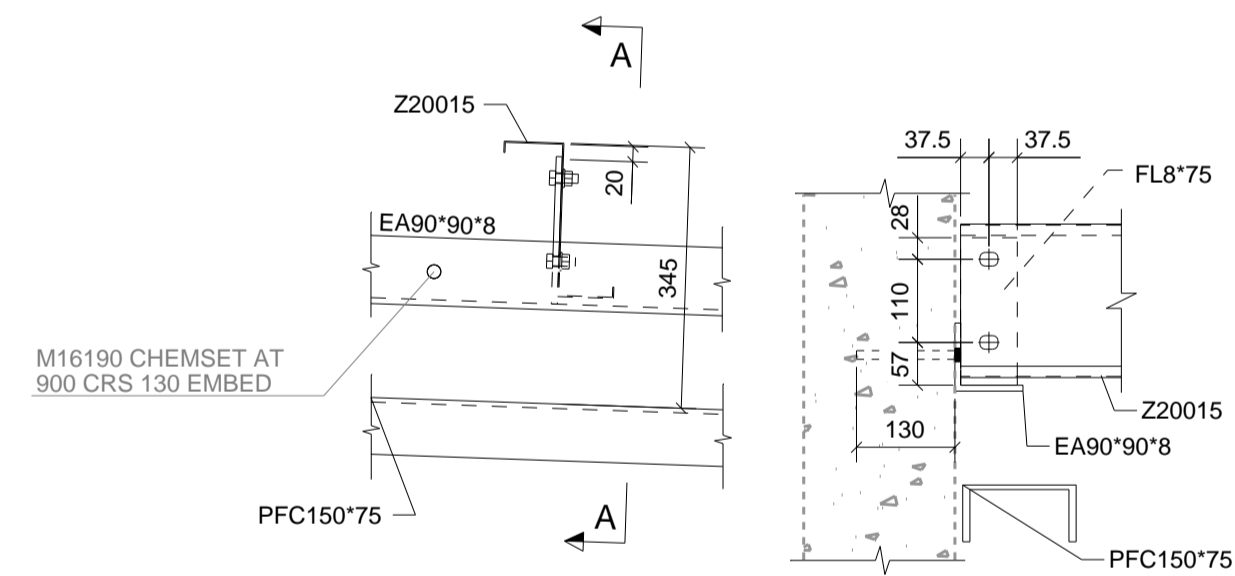
STEEL FRAMING ELEVATION (AT GRID H)



STEEL FRAMING EAST ELEVATION (AT GRID W)

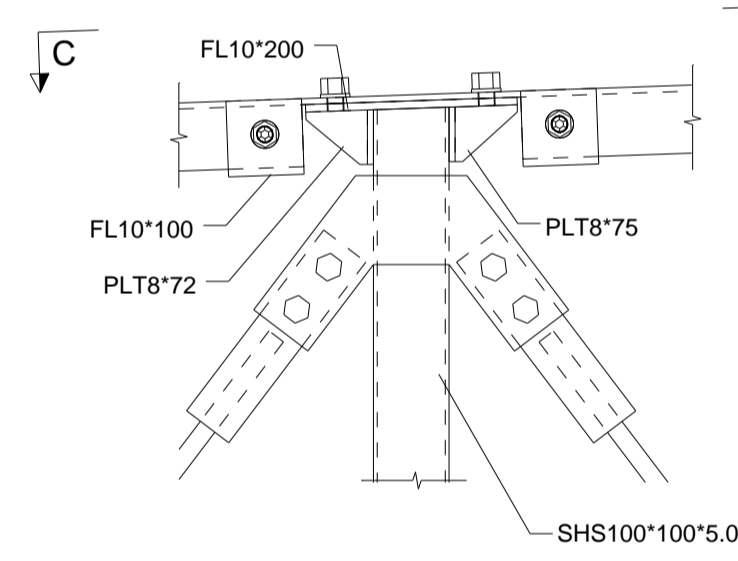


DETAIL - 1

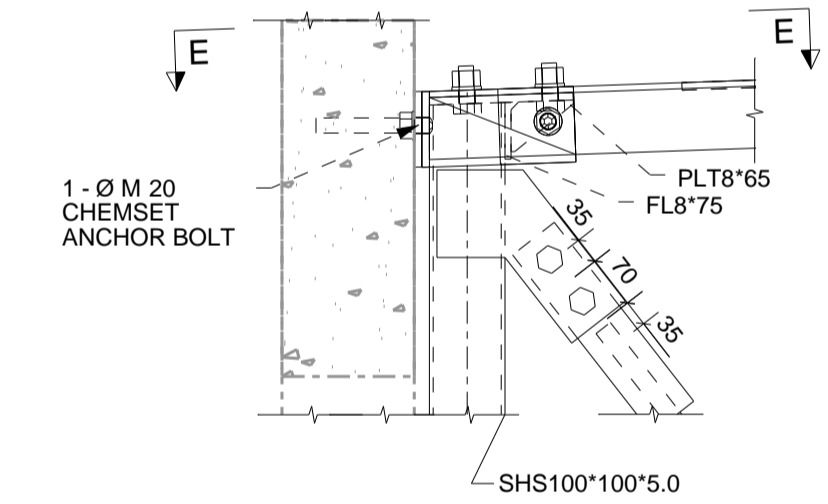


DETAIL - 2

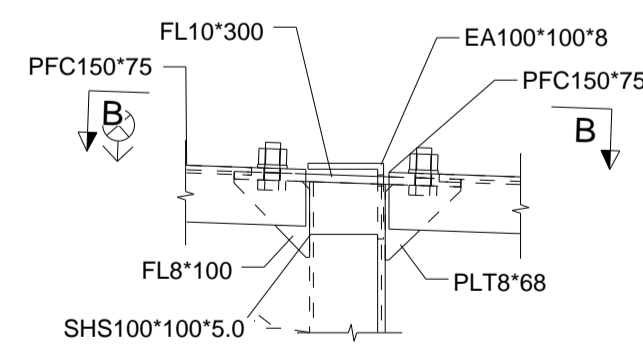
A - A



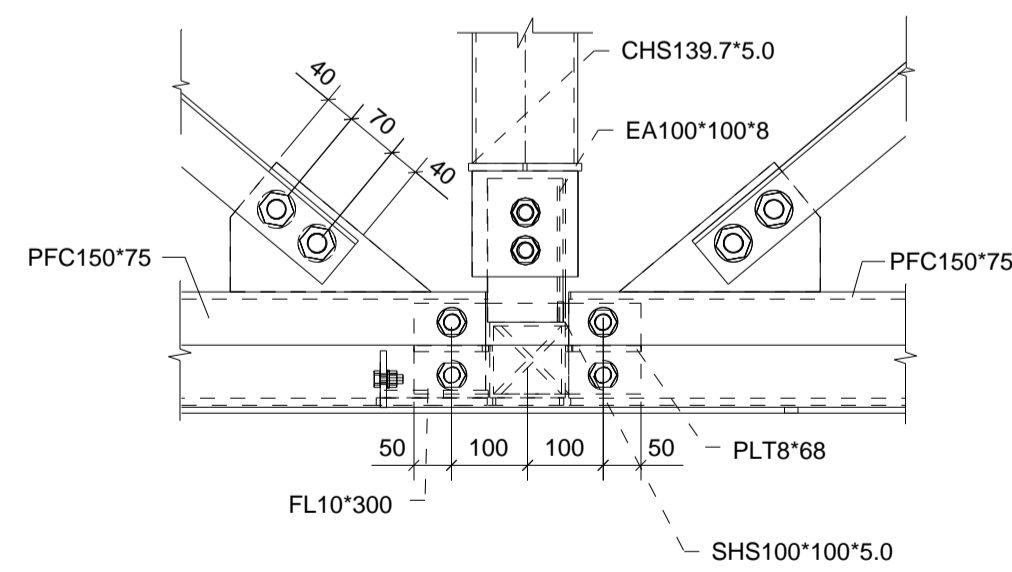
DETAIL - 4



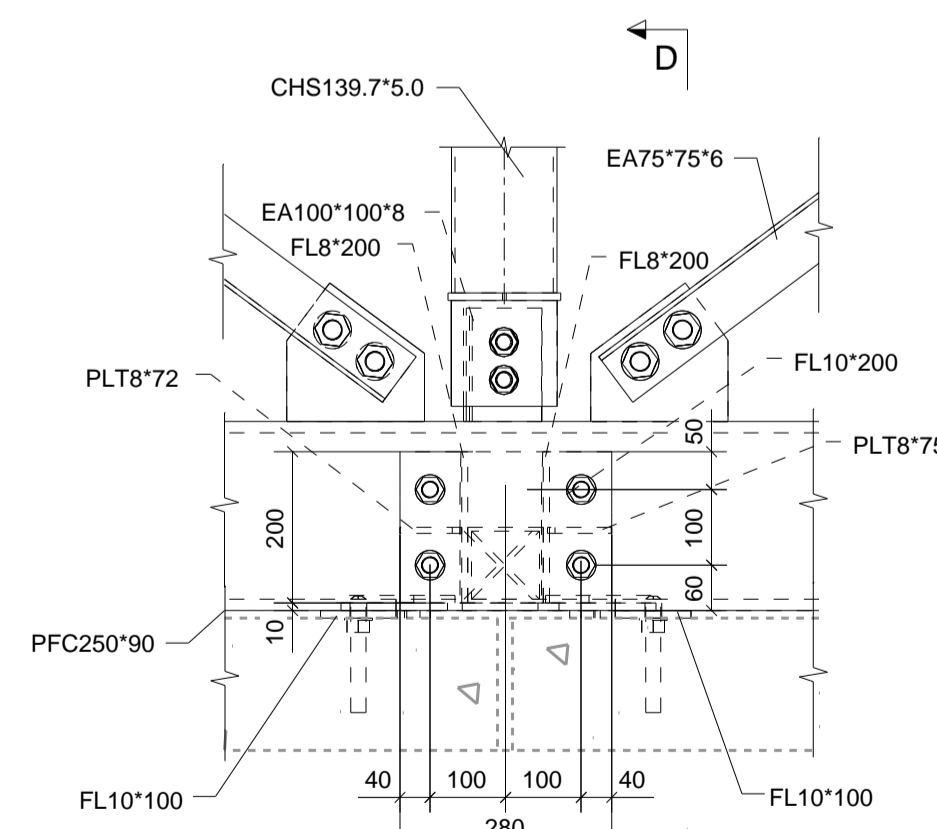
DETAIL - 5



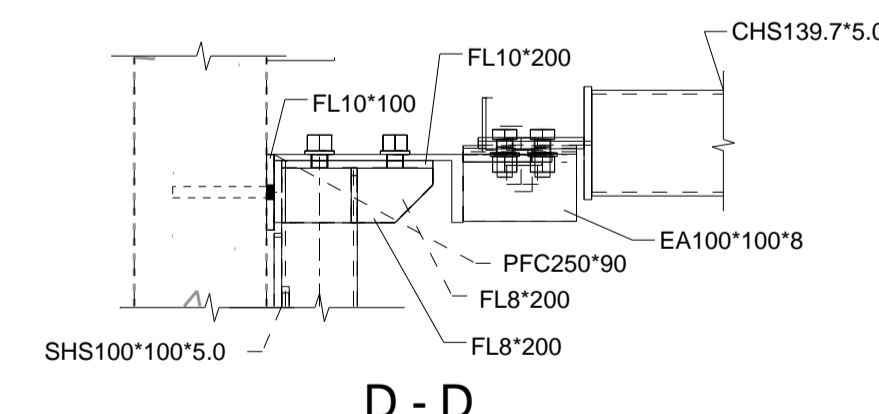
DETAIL - 3



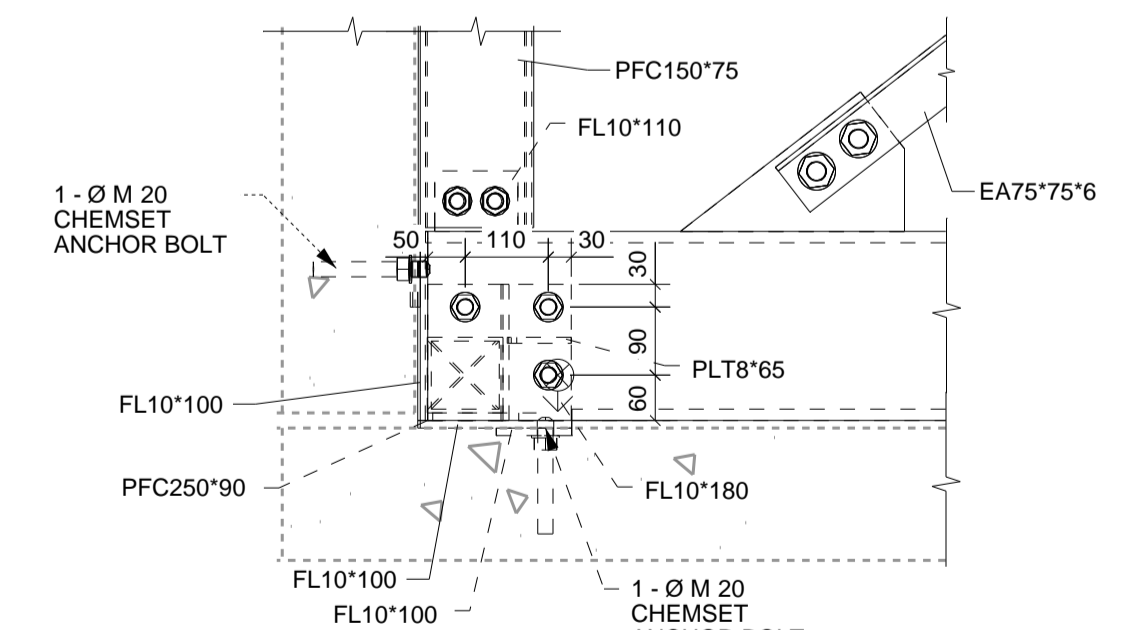
B - B



C - C



D - D



E - E

Erection Notes

REV	NAME	DATE	DESCRIPTION
0	STP	08/10/19	ISSUED FOR CONSTRUCTION

DRAWING TITLE: STEEL FRAMING ELEVATION AT GRID - H & W ISSUE DATE: 08.10.2019 APPROVAL SENT: 08.10.2019

CONTRACT: CHECKED DATE: 08.10.2019 APPROVAL DATE: 08.10.2019

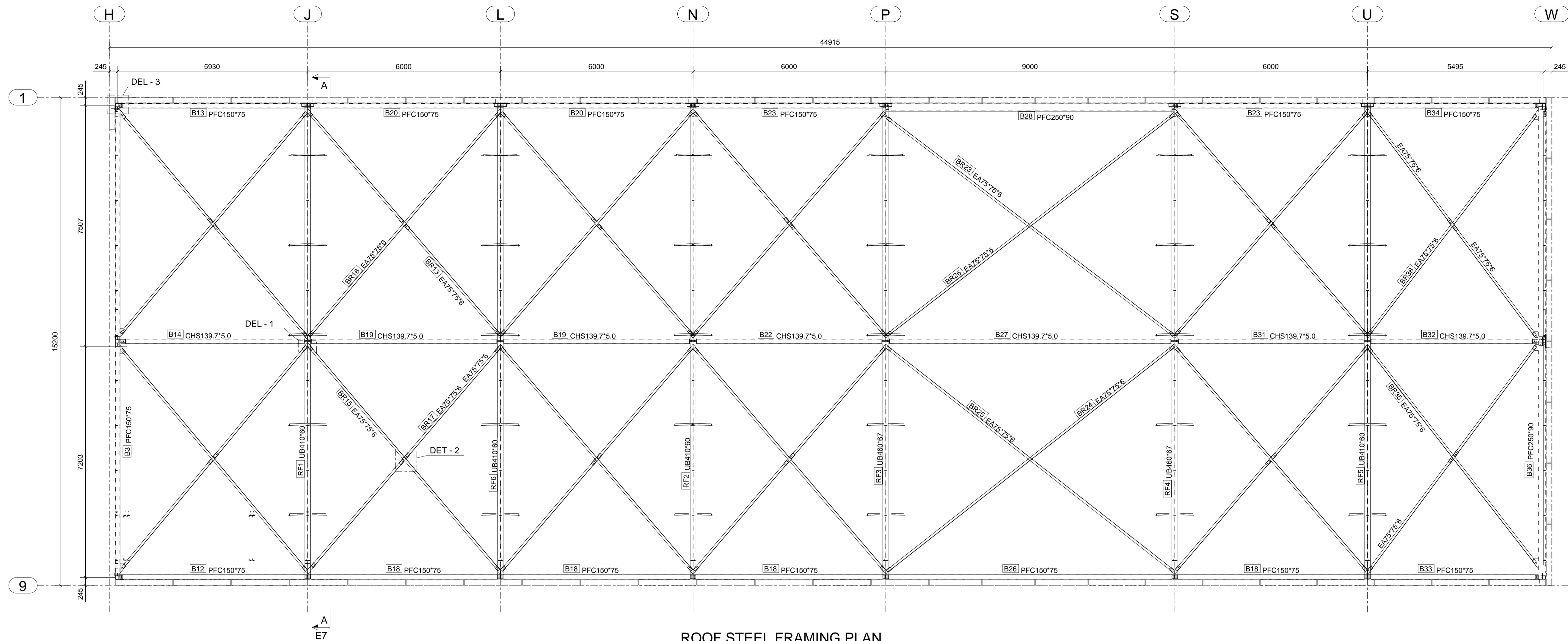
MODELLED BY: BUILD CREATED: 14.09.2019 CHECKED BY: SP APPROVED BY:

SCALE: PROJECT No. DRAWING No. REV.

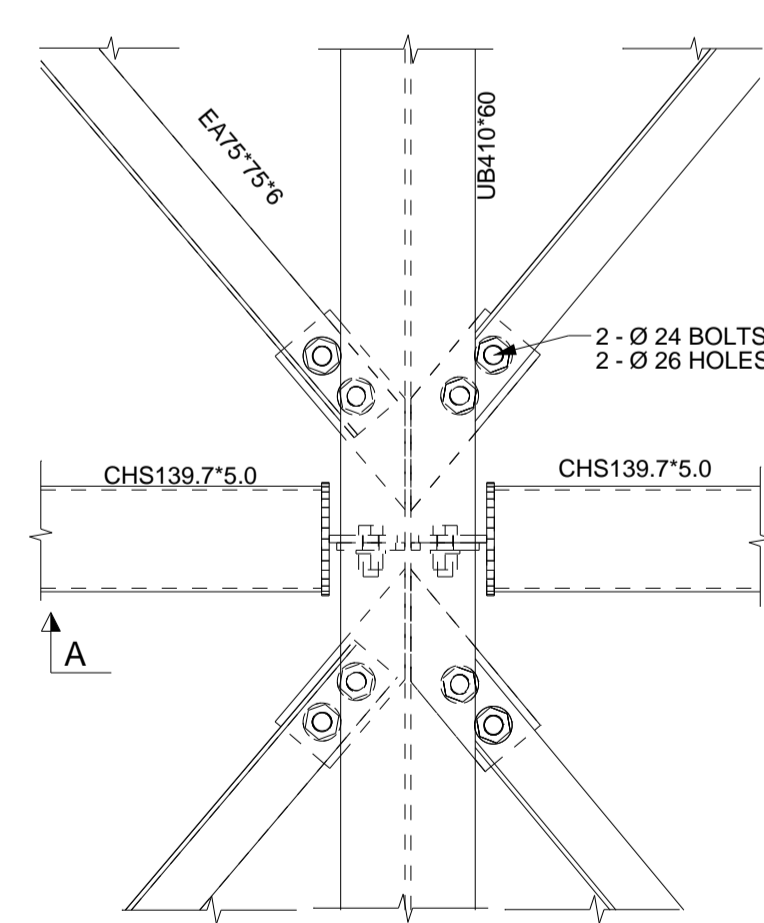
1:10

E4

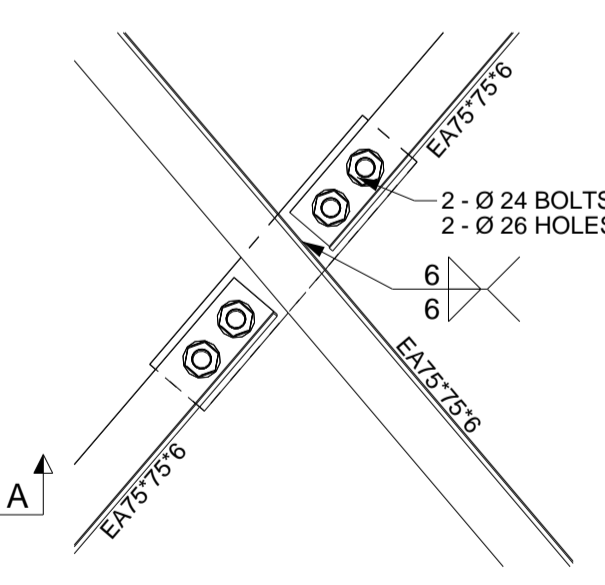
0



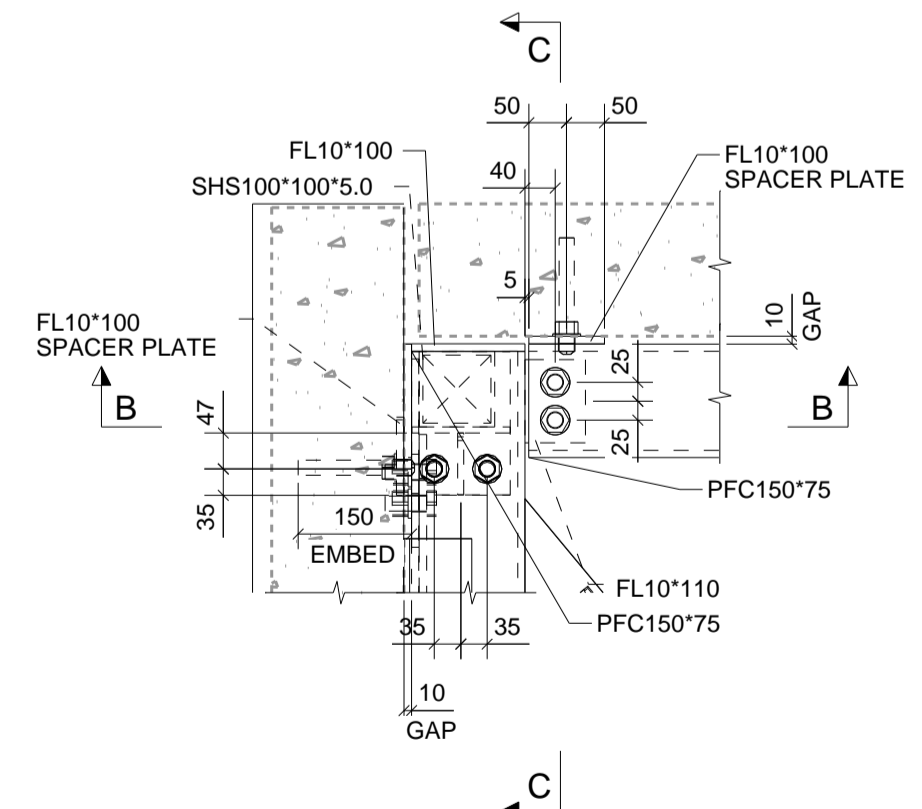
ROOF STEEL FRAMING PLAN



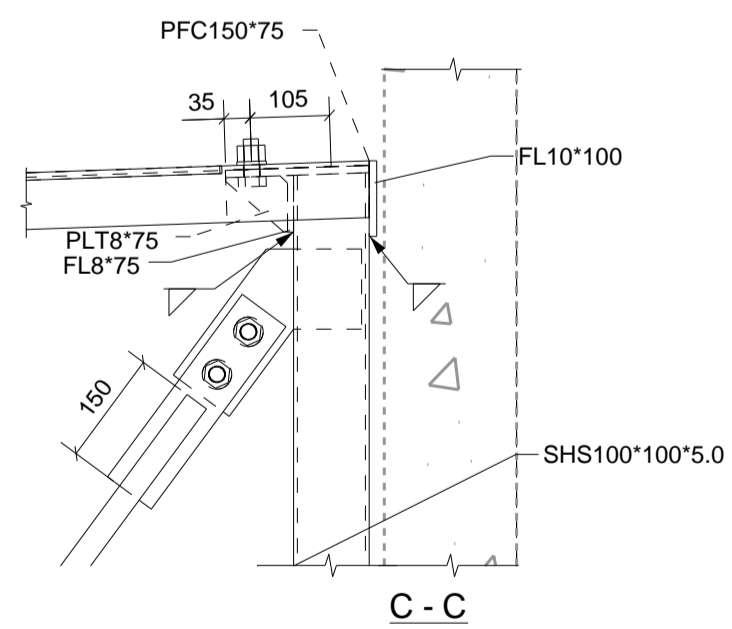
DETAIL - 1



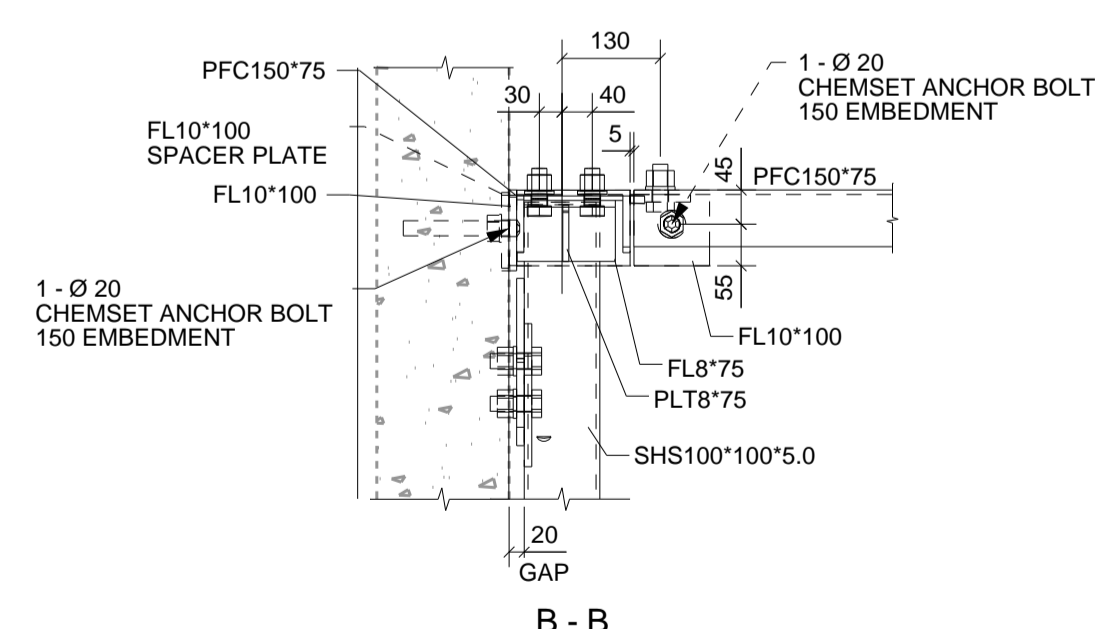
DETAIL - 2



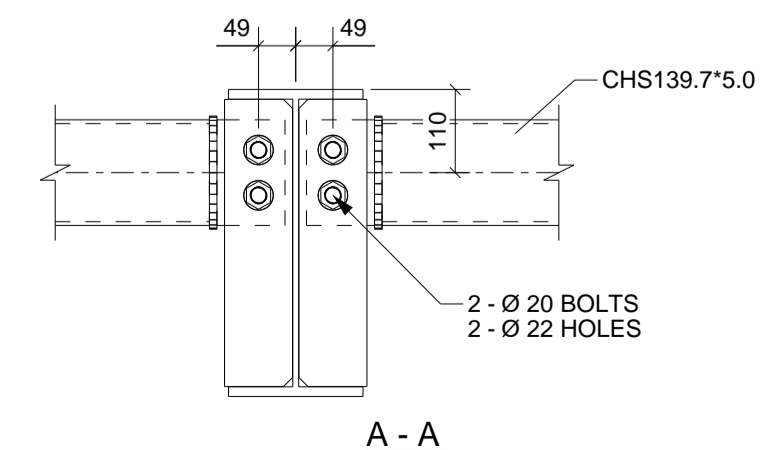
DETAIL - 3



C - C



B - B

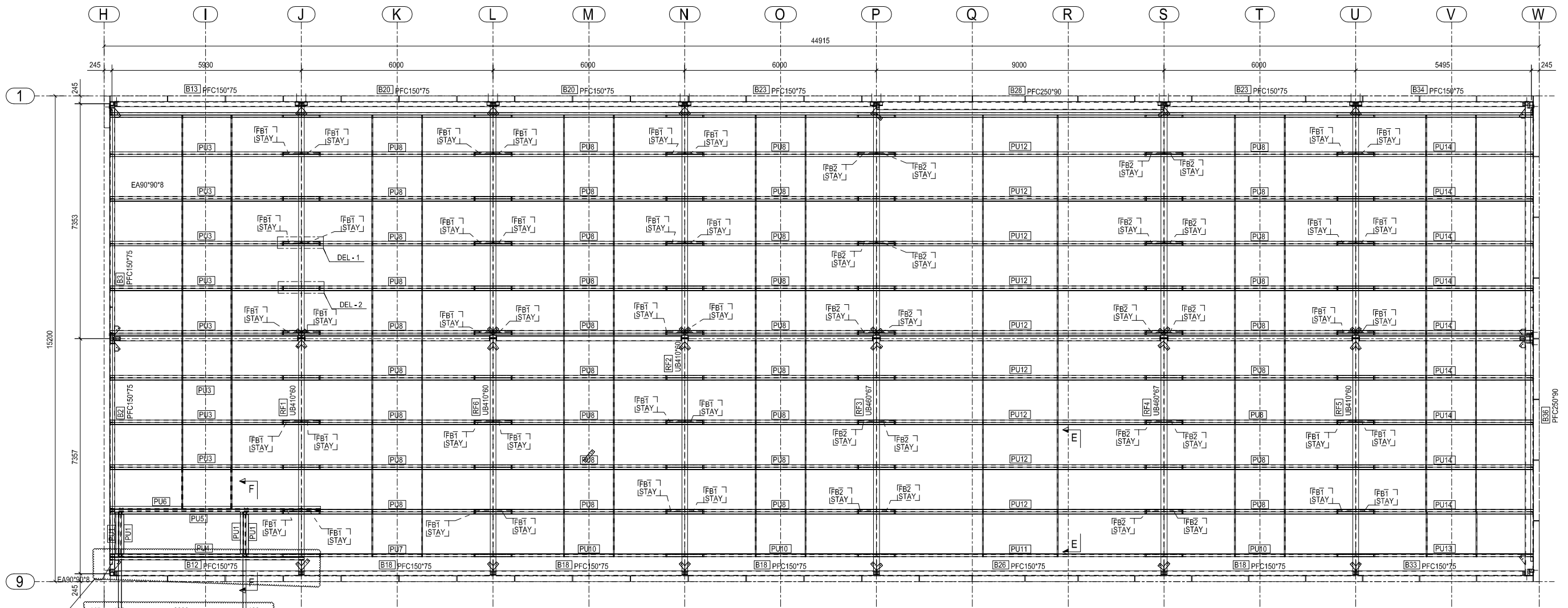


A - A

Erection Notes			
REV	NAME	DATE	DESCRIPTION
0	STP	08/10/19	ISSUED FOR FABRICATION

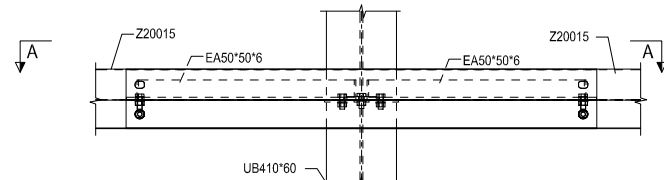
  

DRAWING TITLE: ROOF STEEL FRAMING PLAN		ISSUE DATE: 04.10.2019	APPROVAL SENT: 08.10.2019
CONTRACT:		CHECKED DATE: 08.10.2019	APPROVAL DATE: 08.10.2019
MODELLED BY:		BUILD CREATED: 16.09.2019	CHECKED BY: SP
SCALE: 1:10		PROJECT No.	DRAWING No. E5
			REV. 0

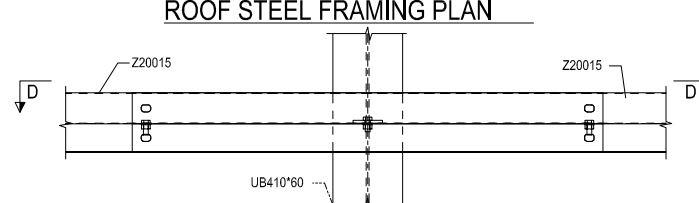


ENGINEER TO CHECK AND PROVIDE GUTTER MAY CLASH CHECK IFC MODEL  
 ENGINEER TO CONFIRM SET OUT FOR 2/ Z20015 ARCHITECT TO CONFIRM OPENING SIZE

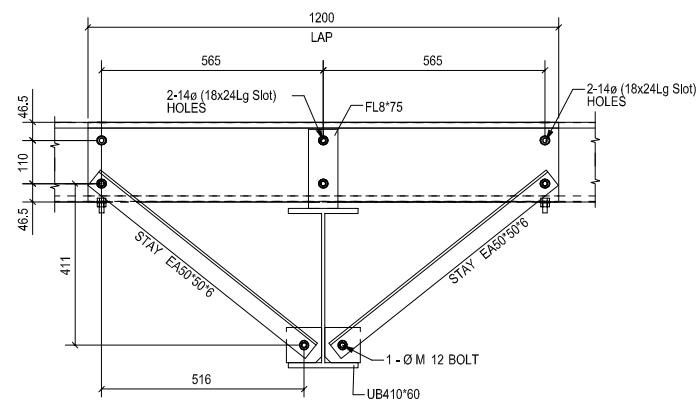
**ROOF STEEL FRAMING PLAN**



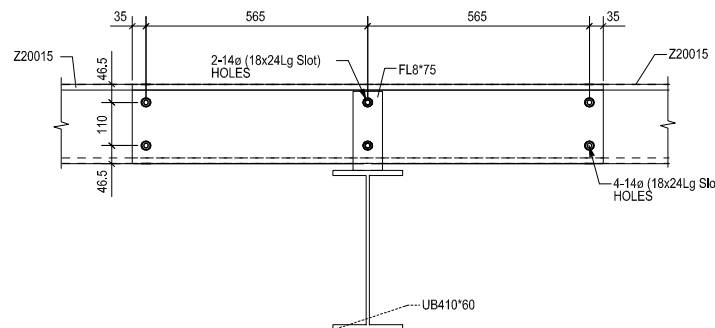
**DETAIL - 1**



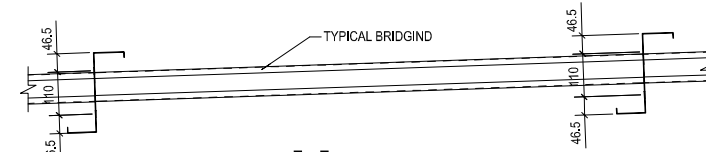
**DETAIL - 2**



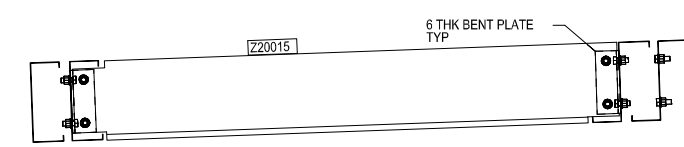
**A - A**



**D - D**



**E - E**  
TYPICAL BRIDGING DETAIL



**F - F**

Erection Notes			
REV	NAME	DATE	DESCRIPTION
0	STP	08/10/19	ISSUED FOR FABRICATION

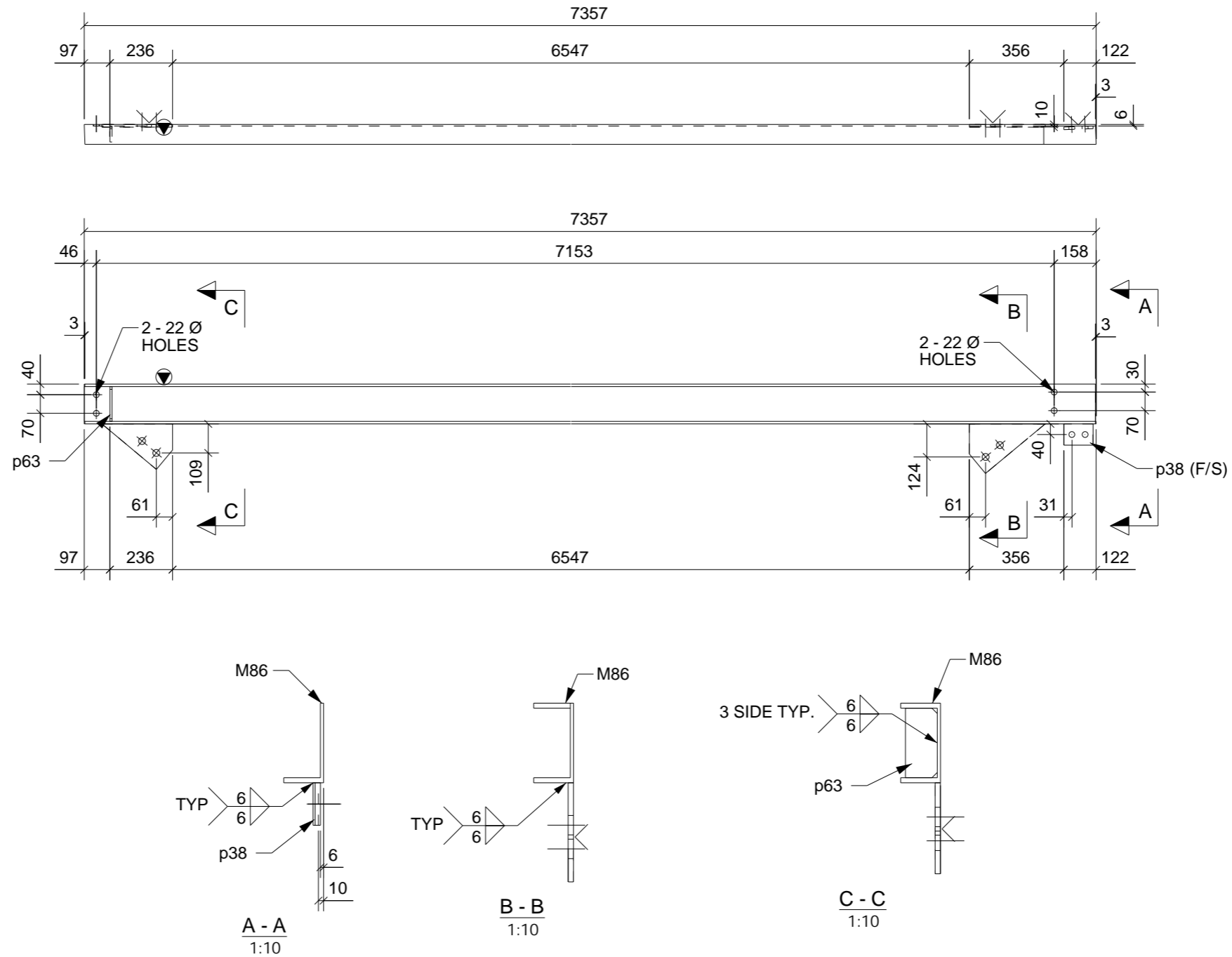
  

DRAWING TITLE: ROOF STEEL PURLIN PLAN	ISSUE DATE: 04.10.2019	APPROVAL DATE: 08.10.2019
CONTRACT:	CHECKED DATE: 08.10.2019	APPROVAL DATE: 08.10.2019
MODELLED BY: BUILD CREATED: 16.08.2019	CHECKED BY: SP	APPROVED BY:
SCALE: PROJECT No.	DRAWING No.	REV.
1:10	E6	0



PHASE	QTY.
1	1
GRID LOCATION	
B2	H/9-5

SUB-ASSEMBLY REF.	
No.	In Assembly.
1	ALONE



**LEGEND:**

- 1). ORIENTATION
- 2). INDICATES CONNECTING SIDE MARK
- 3). FS = FAR SIDE
- 4). NS = NEAR SIDE
- 5). BS = BOTH SIDE
- 6). EL = ELEVATION
- 7). TYP = TYPICAL
- 8). T.O.S. = TOP OF STEEL

**1 BEAM[S] REQUIRED MK B2**

MATERIAL LIST							General Notes	REV	NAME	DATE	DESCRIPTION
ITEM	No.OFF	SECTION	LENGTH	GRADE	WEIGHT(kg)	AREA(m <sup>2</sup> )		0	STP	08/10/19	ISSUED FOR FABRICATION
M86	1	PFC150*75	7357	300	129.9	4.3					
p38	1	FL10*110	80	250	0.7	0.0					
p63	1	PLT8*60	131	250	0.5	0.0					
p82	1	PLT10*171	267	300	2.0	0.1					
p84	1	PLT10*182	292	300	2.4	0.1					
TOTAL:					135.5	4.4					

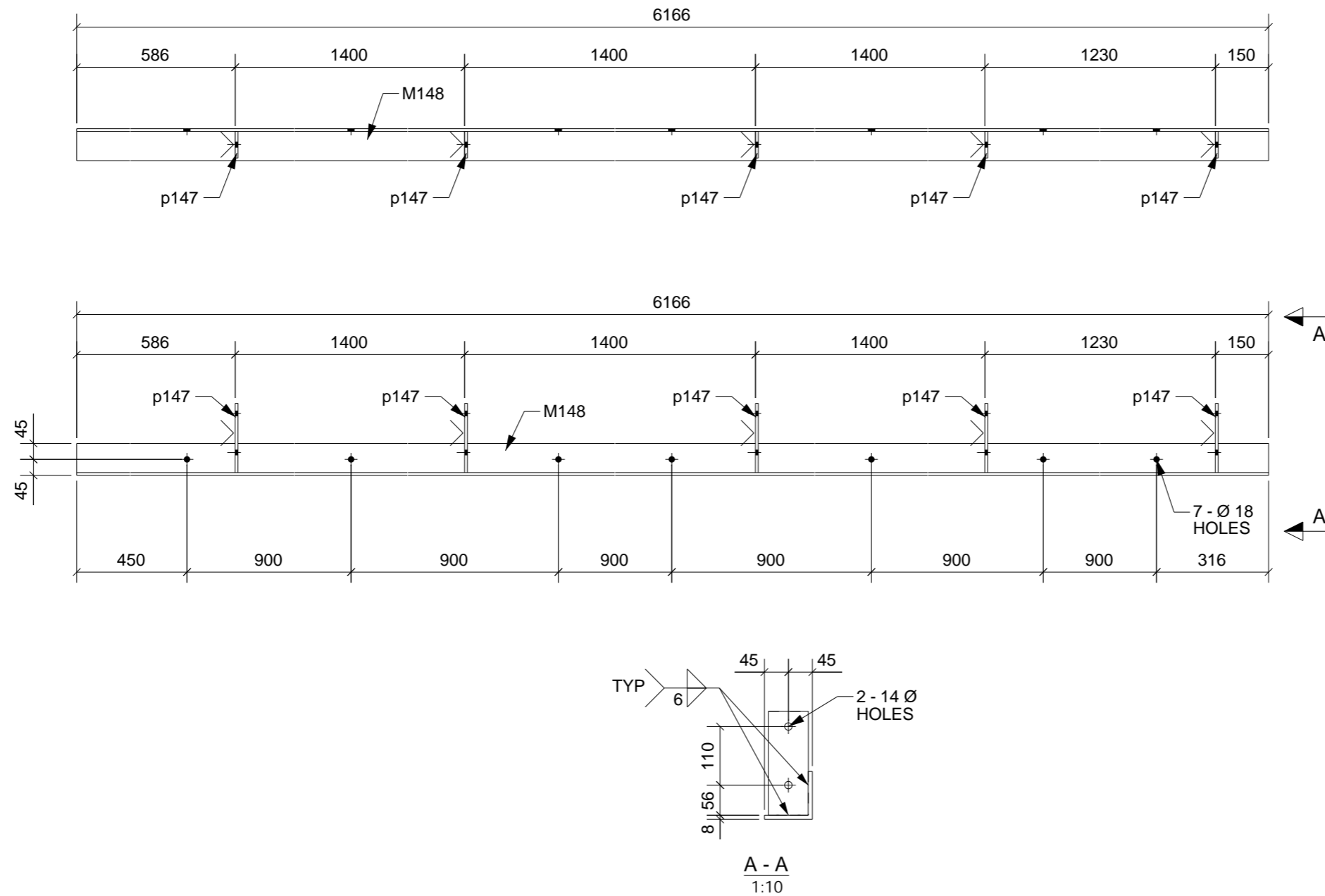
  

DRAWING TITLE:	BEAM	ISSUE DATE:	08.10.2019	APPROVAL SENT:	08.10.2019
CONTRACT:		CHECKED DATE:	08.10.2019	APPROVAL DATE:	08.10.2019
MODELLED BY:	BUILD CREATED: 03.10.2019	CHECKED BY:	SP	APPROVED BY:	
SCALE:	1:10	PROJECT No.		ASSEMBLY No.	B2
QUANTITY:	1	SHEET No.		REV.	0



PHASE	QTY.
1	1
GRID LOCATION	
B40	H/5-1

SUB-ASSEMBLY REF.	
No.	In Assembly.
1	ALONE



**1 BEAM[S] REQUIRED MK B40**

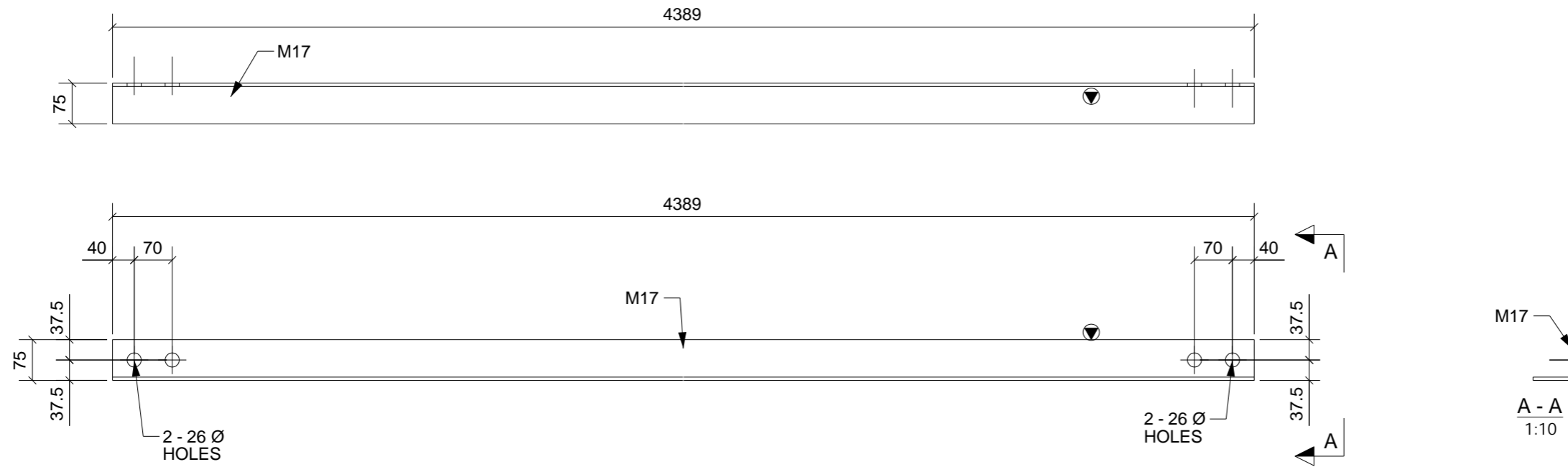
General Notes	REV	NAME	DATE	DESCRIPTION
	0	STP	08/10/19	ISSUED FOR FABRICATION

MATERIAL LIST						
ITEM	No.OFF	SECTION	LENGTH	GRADE	WEIGHT(kg)	AREA(m <sup>2</sup> )
M148	1	EA90*90*8	6166	300	65.3	2.2
p147	5	FL8*75	195	250	4.6	0.2
TOTAL:					69.9	2.3

DRAWING TITLE: BEAM	ISSUE DATE: 04.10.2019	APPROVAL SENT: 08.10.2019
CONTRACT:	CHECKED DATE: 08.10.2019	APPROVAL DATE: 08.10.2019
MODELLED BY:	BUILD CREATED: 03.10.2019	CHECKED BY: SP
SCALE: 1:10	PROJECT No.	ASSEMBLY No. B40
	QUANTITY: SHEET No. 1	REV. 0

PHASE	QTY.
1	1
GRID LOCATION	
BR8	H-1/9-7

SUB-ASSEMBLY REF.	
No.	In Assembly.
1	ALONE



**LEGEND:**

- 1). ▼ ORIENTATION
- 2). < INDICATES CONNECTING SIDE MARK
- 3). FS = FAR SIDE
- 4). NS = NEAR SIDE
- 5). BS = BOTH SIDE
- 6). EL = ELEVATION
- 7). TYP = TYPICAL
- 8). T.O.S. = TOP OF STEEL

**1 BRACING[S] REQUIRED MK BR8**

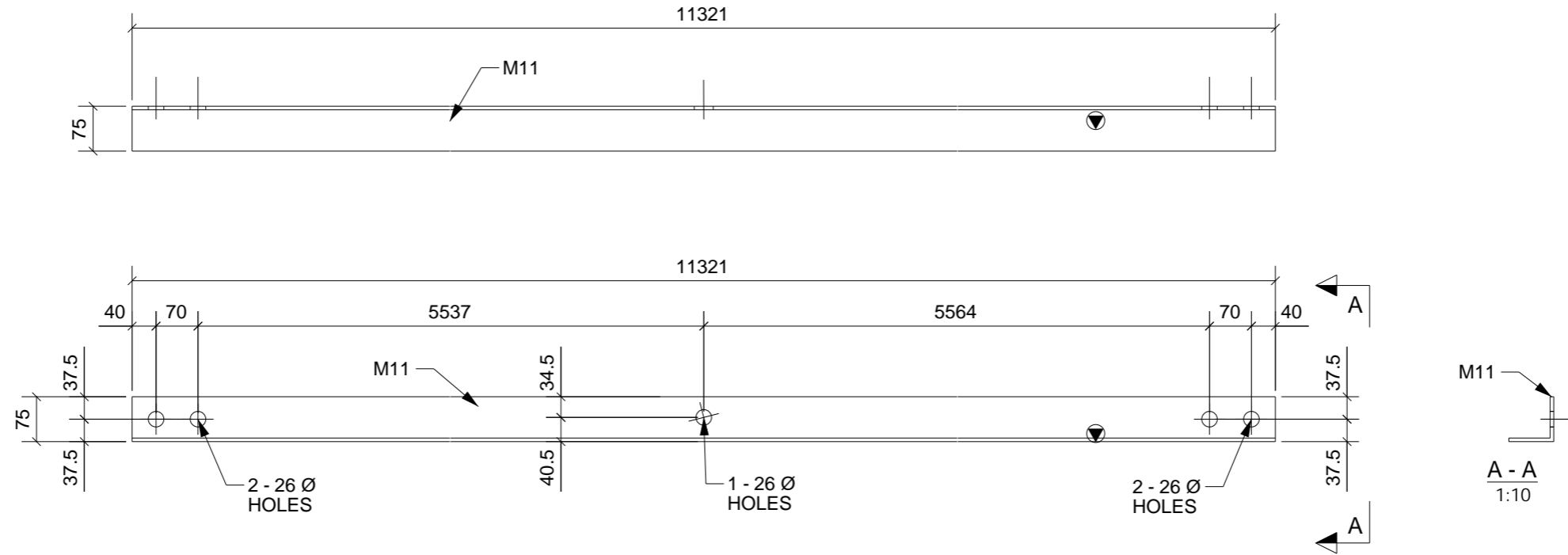
General Notes							REV	NAME	DATE	DESCRIPTION
							0	STP	08/10/19	ISSUED FOR FABRICATION

MATERIAL LIST							DRAWING TITLE: BRACING			ISSUE DATE: 08.10.2019	APPROVAL SENT: 08.10.2019	
ITEM	No.OFF	SECTION	LENGTH	GRADE	WEIGHT(kg)	AREA(m <sup>2</sup> )	CONTRACT:			CHECKED DATE: 08.10.2019	APPROVAL DATE: 08.10.2019	
M17	1	EA75*75*6	4389	G450	29.9	1.3	MODELLED BY: BUILD CREATED: 04.10.2019			CHECKED BY: SP	APPROVED BY:	
TOTAL:						29.9	1.3	SCALE: 1:10	PROJECT No.	ASSEMBLY No. BR8	QUANTITY: SHEET No. 1	REV. 0

PHASE	QTY.
1	1
GRID LOCATION	
BR25	P-S/9-5

SUB-ASSEMBLY REF.	
No.	In Assembly.
1	ALONE



**LEGEND:**

- 1). ▼ ORIENTATION
- 2). < INDICATES CONNECTING SIDE MARK
- 3). FS = FAR SIDE
- 4). NS = NEAR SIDE
- 5). BS = BOTH SIDE
- 6). EL = ELEVATION
- 7). TYP = TYPICAL
- 8). T.O.S. = TOP OF STEEL

**1 BRACING[S] REQUIRED MK BR25**

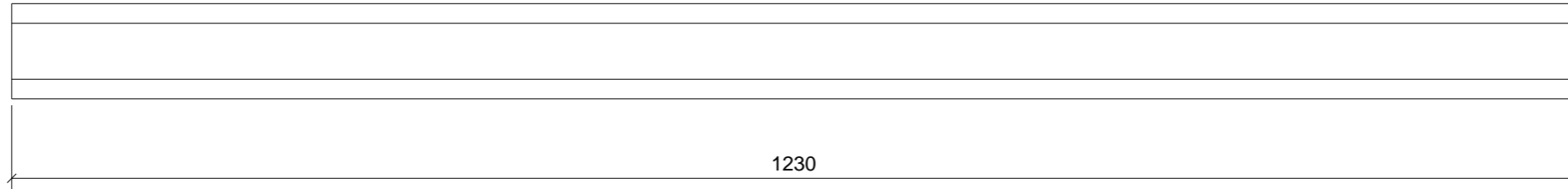
General Notes							REV	NAME	DATE	DESCRIPTION
							0	STP	08/10/19	ISSUED FOR FABRICATION

MATERIAL LIST							DRAWING TITLE: BRACING			ISSUE DATE: 08.10.2019			APPROVAL SENT: 08.10.2019					
ITEM	No.OFF	SECTION	LENGTH	GRADE	WEIGHT(kg)	AREA(m <sup>2</sup> )	CONTRACT:			CHECKED DATE: 08.10.2019			APPROVAL DATE: 08.10.2019					
M11	1	EA75*75*6	11321	G450	77.0	3.3	MODELLED BY: BUILD CREATED: 04.10.2019			CHECKED BY: SP			APPROVED BY:					
TOTAL:							SCALE: 1:10			PROJECT No.			ASSEMBLY No. BR25			QUANTITY: SHEET No. 1		REV. 0

PHASE	QTY.
1	12
GRID LOCATION	
BRG10	J-K/3-2
BRG10	K-L/3-2
BRG10	L-M/3-2
BRG10	M-N/3-2
BRG10	N-O/3-2
BRG10	O-P/3-2
BRG10	Q/3-2
BRG10	R/3-2
BRG10	S-T/3-2
BRG10	T-U/3-2
BRG10	U-V/3-2
BRG10	V-W/3-2

SUB-ASSEMBLY REF.	
No.	In Assembly.
12	ALONE



**12 H2C20PB20[S] REQUIRED MK BRG10**

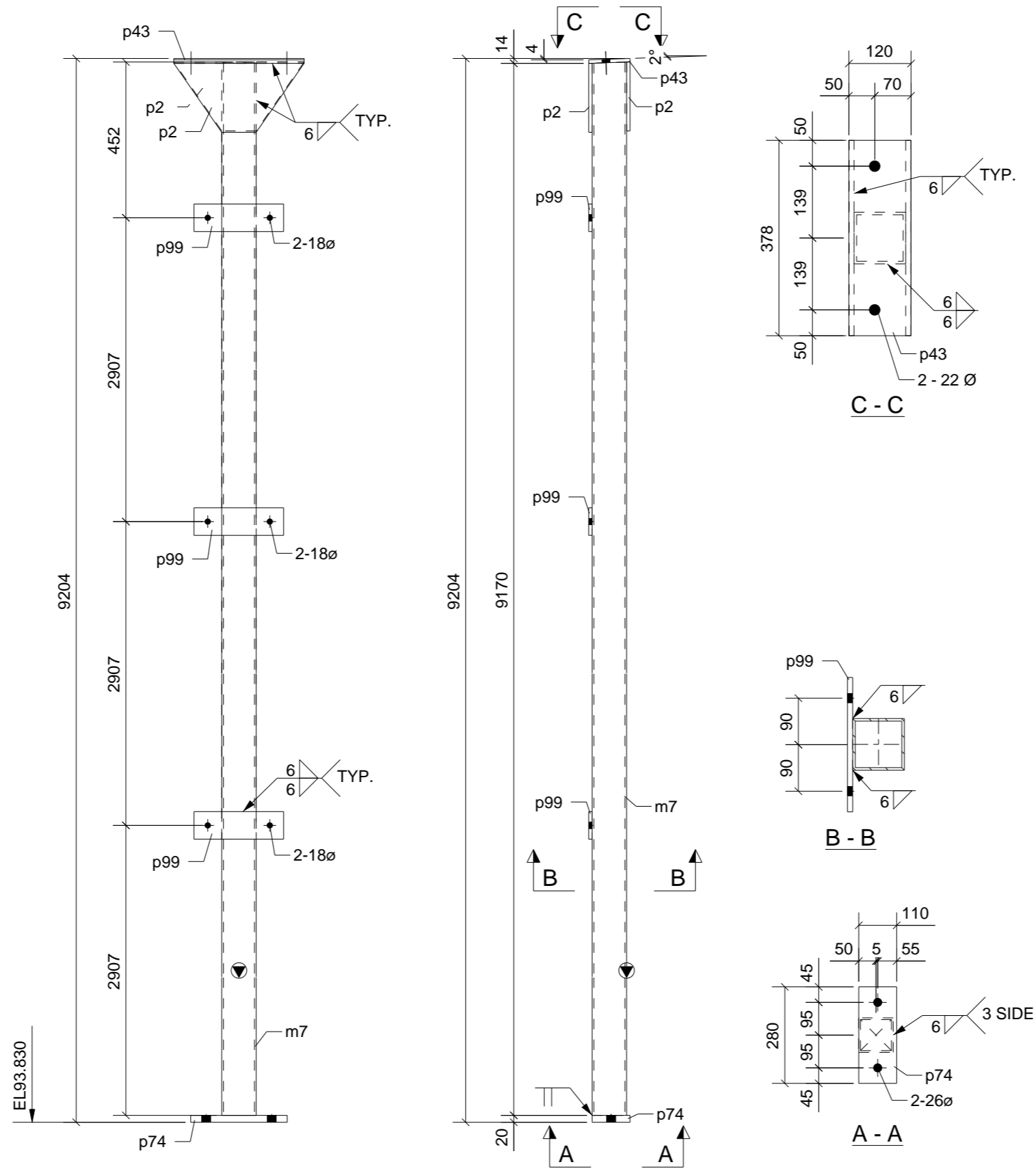
General Notes				REV	NAME	DATE	DESCRIPTION
				0	STP	08/10/19	ISSUED FOR FABRICATION

MATERIAL LIST						
ITEM	No.OFF	SECTION	LENGTH	GRADE	WEIGHT(kg)	AREA(m <sup>2</sup> )
brg1	12	LYS-HOOK-LOK-II	1230	G450	51.3	4.9
TOTAL:					51.3	4.9

DRAWING TITLE: STANDARD	ISSUE DATE: 08.10.2019	APPROVAL SENT: 08.10.2019
CONTRACT:	CHECKED DATE: 08.10.2019	APPROVAL DATE: 08.10.2019
MODELLED BY:	BUILD CREATED: 08.10.2019	CHECKED BY: SP
SCALE: 1:5	PROJECT No.	ASSEMBLY No. BRG10
QUANTITY: 12	SHEET No.	REV. 0

PHASE	QTY.
1	2
GRID LOCATION	
C7	P/9
C7	S/9

SUB-ASSEMBLY REF.	
No.	In Assembly.
2	ALONE



**2 COLUMN[S] REQUIRED MK C7**

MATERIAL LIST						
ITEM	No.OFF	SECTION	LENGTH	GRADE	WEIGHT(kg)	AREA(m <sup>2</sup> )
m7	2	SHS100*100*5.0	9174	350	260.7	7.0
p2	4	FL10*200	378	300	15.0	0.4
p43	2	PL10*120	378	300	7.1	0.2
p74	2	PLT20*110	280	300	9.7	0.2
p99	6	PLT10*80	260	300	9.8	0.3
TOTAL:					302.3	8.0

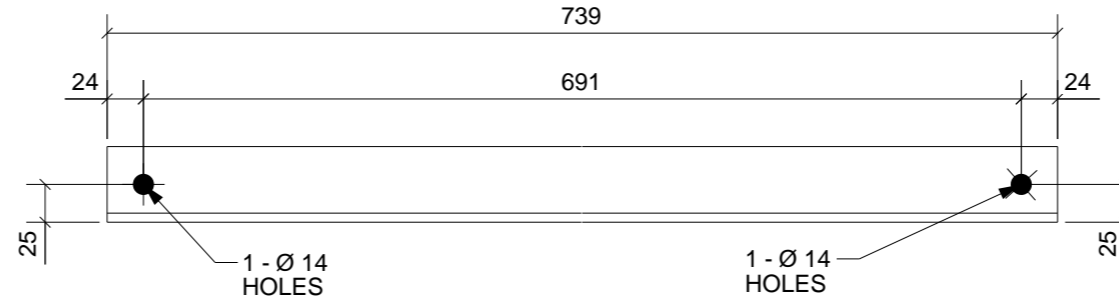
**General Notes**

REV	NAME	DATE	DESCRIPTION
0	STP	08/10/19	ISSUED FOR FABRICATION

DRAWING TITLE: COLUMN		ISSUE DATE: 08.10.2019	APPROVAL SENT: 08.10.2019
CONTRACT:		CHECKED DATE: 08.10.2019	APPROVAL DATE: 08.10.2019
MODELLED BY: BUILD CREATED: 03.10.2019		CHECKED BY: SP	APPROVED BY:
SCALE: 1:10	PROJECT No.	ASSEMBLY No. C7	QUANTITY: SHEET No. 2
			REV. 0

PHASE	QTY.
1	20
GRID LOCATION	
FB2	O-P/3-2
FB2	O-P/4
FB2	O-P/6-5
FB2	O-P/7
FB2	O-P/9-8
FB2	P-Q/3-2
FB2	P-Q/4
FB2	P-Q/6-5
FB2	P-Q/7
FB2	P-Q/9-8
FB2	R-S/3-2
FB2	R-S/4
FB2	R-S/6-5
FB2	R-S/7
FB2	R-S/9-8
FB2	S-T/3-2
FB2	S-T/4
FB2	S-T/6-5
FB2	S-T/7
FB2	S-T/9-8

SUB-ASSEMBLY REF.	
No.	In Assembly.
20	ALONE



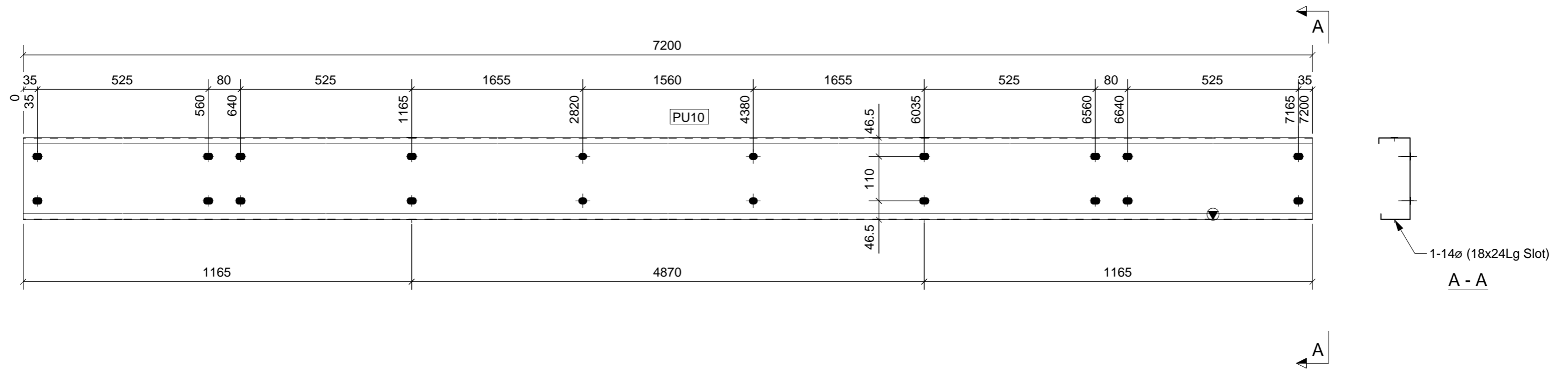
**20 STAY[S] REQUIRED MK FB2**

General Notes							REV	NAME	DATE	DESCRIPTION
							0	STP	08/10/19	ISSUED FOR FABRICATION

MATERIAL LIST							DRAWING TITLE: PURLIN				ISSUE DATE: 04.10.2019		APPROVAL SENT: 08.10.2019		
ITEM	No.OFF	SECTION	LENGTH	GRADE	WEIGHT(kg)	AREA(m <sup>2</sup> )	CONTRACT:				CHECKED DATE: 08.10.2019		APPROVAL DATE: 08.10.2019		
m202	20	EA50*50*6	739	250	65.9	3.0	MODELLED BY: BUILD CREATED: 04.10.2019				CHECKED BY: SP		APPROVED BY:		
TOTAL:						65.9	3.0	SCALE: 1:5		PROJECT No.		ASSEMBLY No. FB2		QUANTITY: SHEET No. 20	
														0	

PHASE	QTY.
1	3
GRID LOCATION	
PU10	K-O/9-8
PU10	M-Q/9-8
PU10	R-V/9-8

SUB-ASSEMBLY REF.	
No.	In Assembly.
3	ALONE



**3 PURLIN[S] REQUIRED MK PU10**

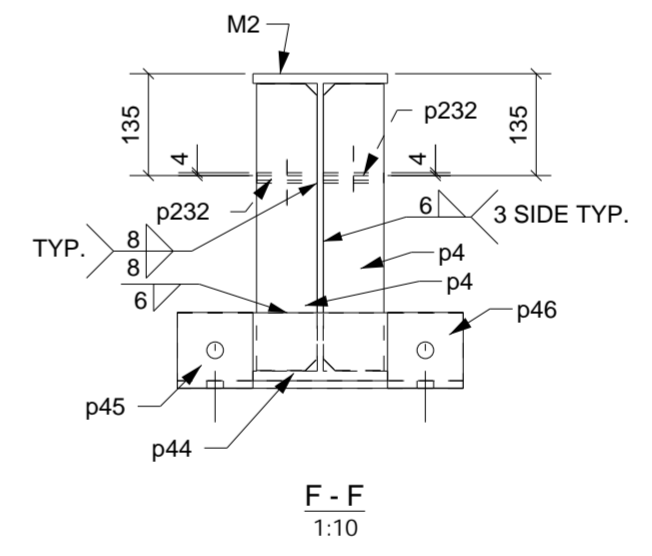
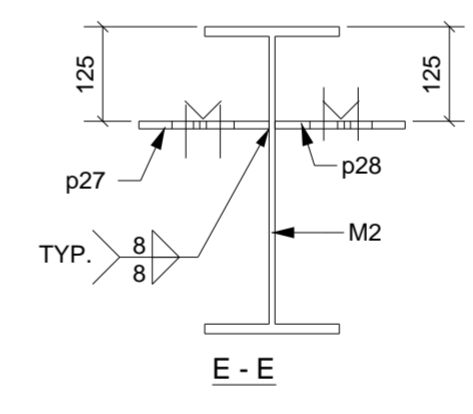
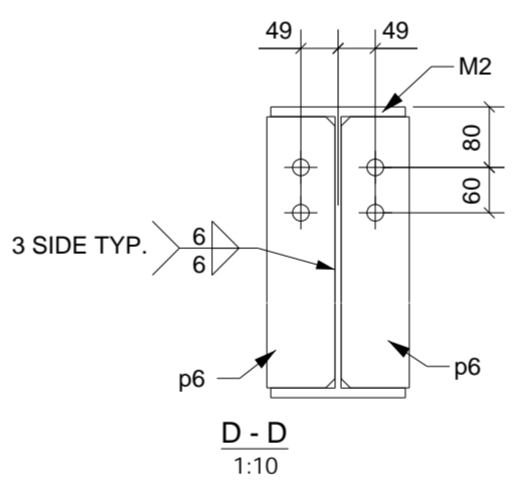
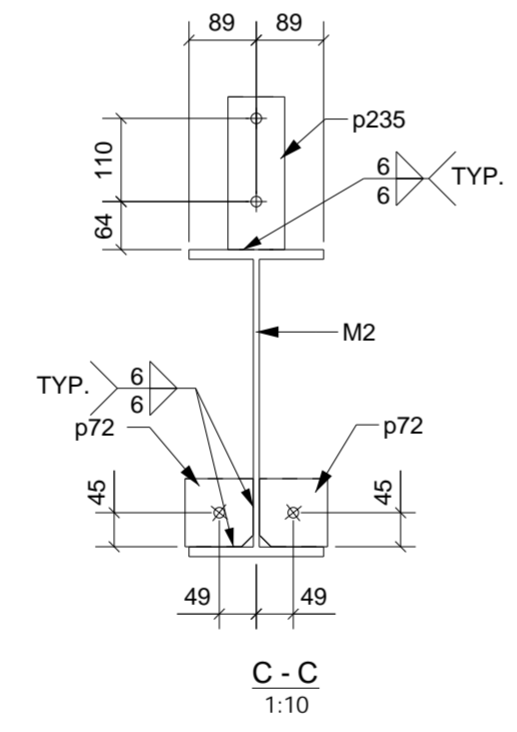
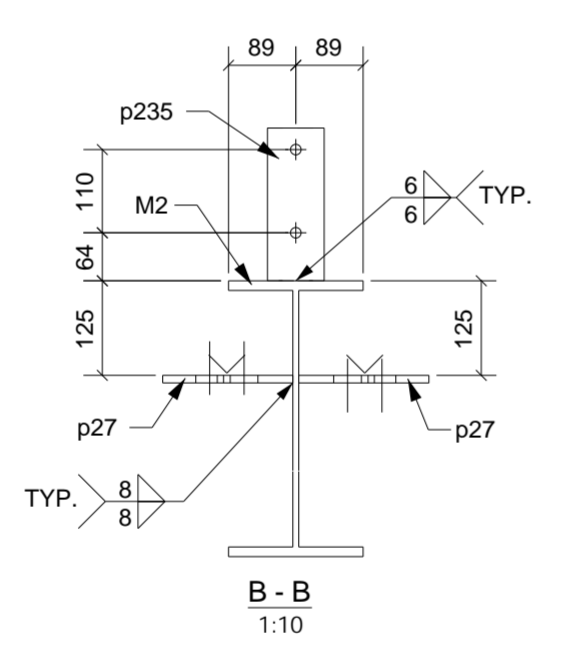
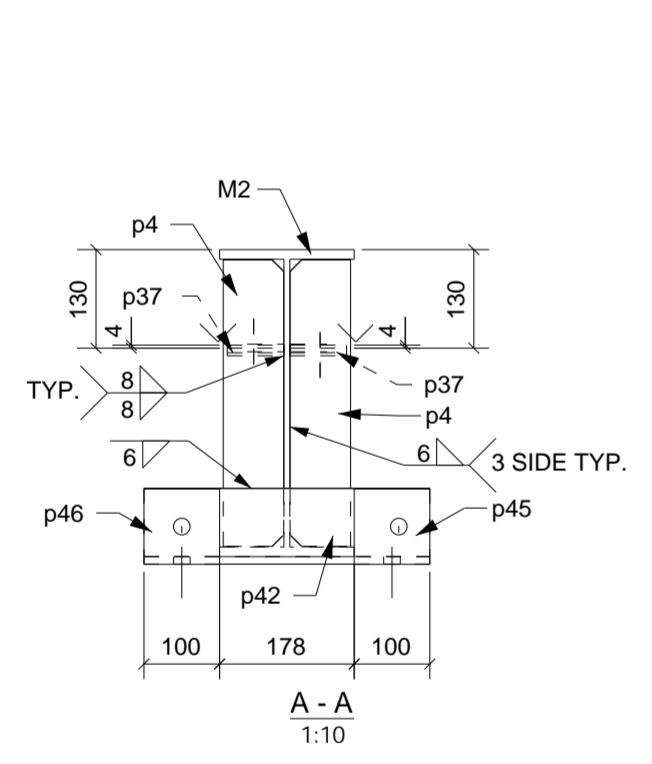
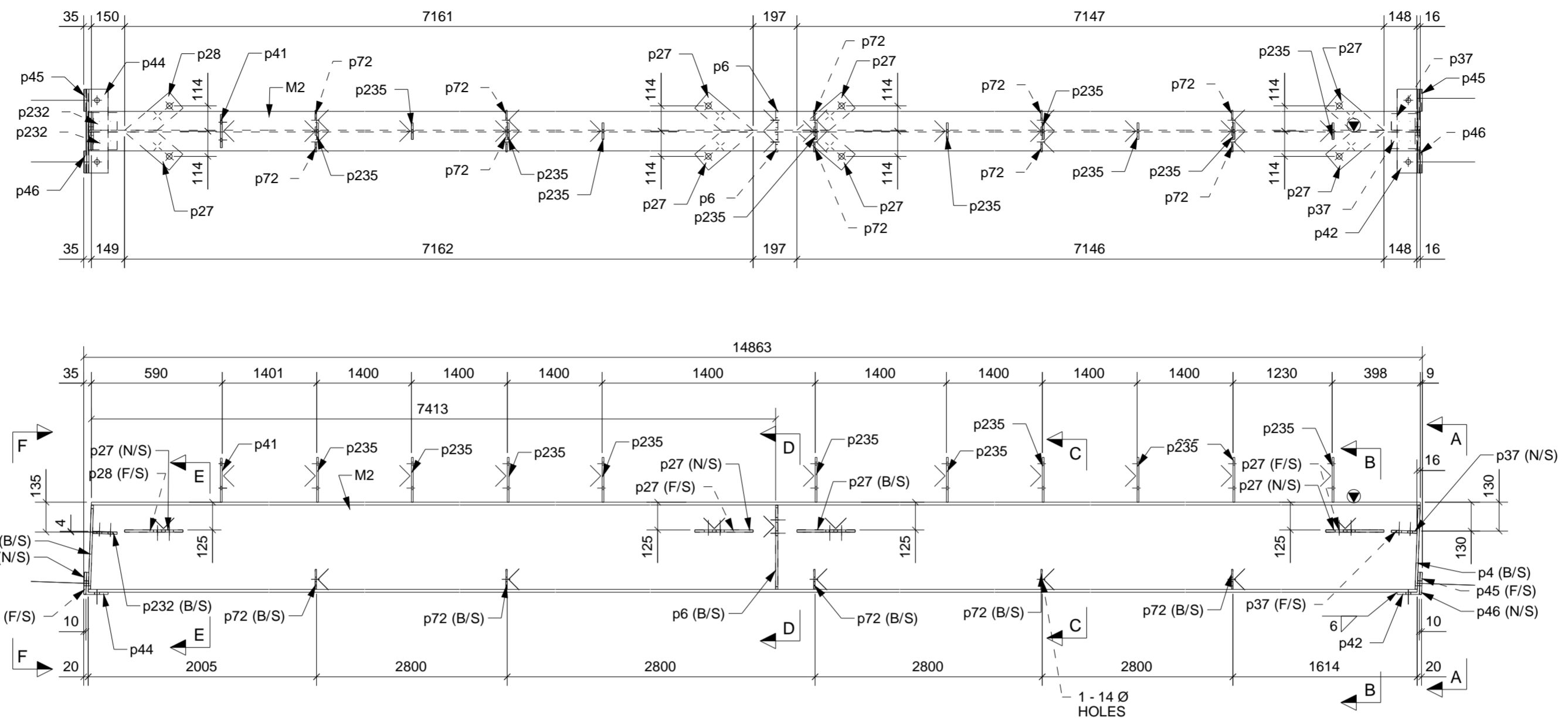
General Notes						REV	NAME	DATE	DESCRIPTION
ALL HOLE ARE TO BE SLOT 18X24 U.N.O						0	STP	08/10/19	ISSUED FOR FABRICATION

DRAWING TITLE: PURLIN		ISSUE DATE: 08.10.2019	APPROVAL SENT: 08.10.2019
CONTRACT:		CHECKED DATE: 08.10.2019	APPROVAL DATE: 08.10.2019
MODELLED BY: BUILD CREATED: 04.10.2019		CHECKED BY: SP	APPROVED BY:
SCALE: 1:10	PROJECT No.	ASSEMBLY No. PU10	QUANTITY: SHEET No. 3 REV. 0

MATERIAL LIST						
ITEM	No.OFF	SECTION	LENGTH	GRADE	WEIGHT(kg)	AREA(m <sup>2</sup> )
M56	3	CC203-1.5-15-79-15-74	7200	G450	96.6	16.5
TOTAL:					96.6	16.5

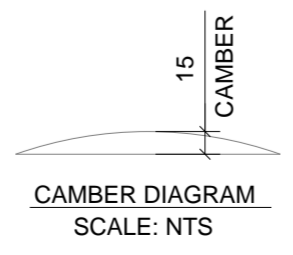
PHASE	QTY.
1	1
GRID LOCATION	
RF2	N/9-1

SUB-ASSEMBLY REF.
No. In Assembly
1 ALONE



MATERIAL LIST						
ITEM	No OFF	SECTION	LENGTH	GRADE	WEIGHT(kg)	AREA(m <sup>2</sup> )
M2	1	UB410*60	14833	300	889.6	22.1
p4	4	PLT10*80	379	300	9.5	0.3
p6	2	FL10*90	380	300	5.3	0.2
p27	7	PLT10*95	265	300	10.9	0.3
p28	1	FL10*95	265	300	1.6	0.0
p37	2	FL10*75	115	300	1.4	0.0
p41	1	FL8*150	199	250	1.9	0.1
p42	1	PL10*181	378	300	5.7	0.2
p44	1	PL10*179	378	300	5.6	0.2
p45	2	FL10*100	100	300	1.6	0.0
p46	2	FL10*100	100	300	1.6	0.0
p72	10	FL6*90	90	250	3.8	0.2
p232	2	FL10*110	80	300	1.4	0.0
p235	10	FL8*75	202	250	9.5	0.3
TOTAL:					949.2	24.0

- LEGEND:**
- ORIENTATION
  - < INDICATES CONNECTING SIDE MARK
  - FS = FAR SIDE
  - NS = NEAR SIDE
  - BS = BOTH SIDE
  - EL = ELEVATION
  - TYP = TYPICAL
  - T.O.S. = TOP OF STEEL



**1 RAFTER[S] REQUIRED MK RF2**

General Notes			
REV	NAME	DATE	DESCRIPTION
0	STP	08/10/19	ISSUED FOR FABRICATION

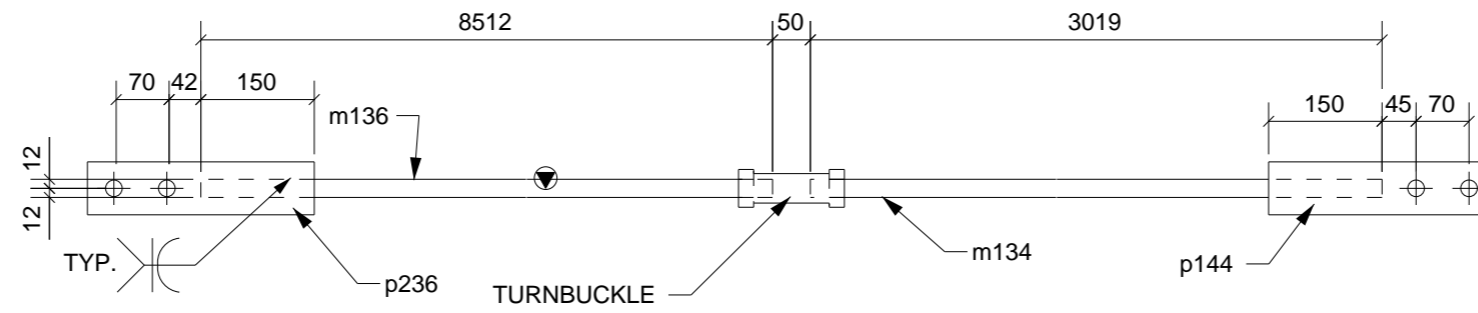
DRAWING TITLE:	RAFTER	ISSUE DATE:	08.10.2019	APPROVAL SENT:	08.10.2019
CONTRACT:		CHECKED DATE:	08.10.2019	APPROVED BY:	
MODELLED BY:	BUILD CREATED: 03.10.2019	CHECKED BY:	SP	APPROVED BY:	
SCALE:	PROJECT No.	ASSEMBLY No.		QUANTITY:	SHEET No.
1:10		RF2		1	0





PHASE	QTY.
1	1
GRID LOCATION	
VBR3	W/9-6

SUB-ASSEMBLY REF.	
No.	In Assembly.
1	ALONE



**1 ROD[S] REQUIRED MK VBR3**

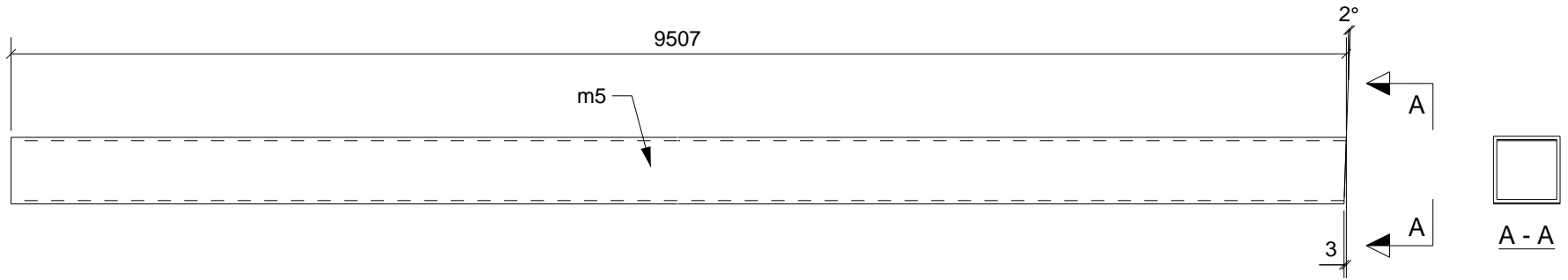
MATERIAL LIST						
ITEM	No.OFF	SECTION	LENGTH	GRADE	WEIGHT(kg)	AREA(m <sup>2</sup> )
m134	1	D24	3019	S235JR	0.0	0.2
m136	1	D24	8512	S235JR	0.0	0.6
p144	1	FL10*300	70	250	1.6	0.0
p201	1	PD50*13	140	S235JR	0.0	0.0
p236	1	FL10*300	70	300	1.6	0.0
TOTAL:					3.3	1.0

**General Notes**

REV	NAME	DATE	DESCRIPTION
0	STP	08/10/19	ISSUED FOR FABRICATION

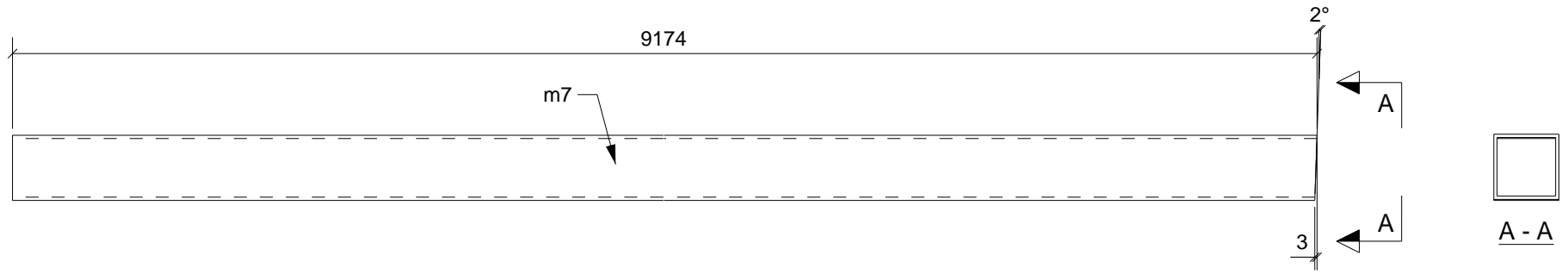
DRAWING TITLE: V-BRACING		ISSUE DATE: 08.10.2019	APPROVAL SENT: 08.10.2019
CONTRACT:		CHECKED DATE: 08.10.2019	APPROVAL DATE: 08.10.2019
MODELLED BY:		BUILD CREATED: 04.10.2019	CHECKED BY: SP
SCALE: 1:10		PROJECT No.	ASSEMBLY No. VBR3
		QUANTITY: SHEET No. 1	REV. 0

Qty.	In Assembly
1	C1



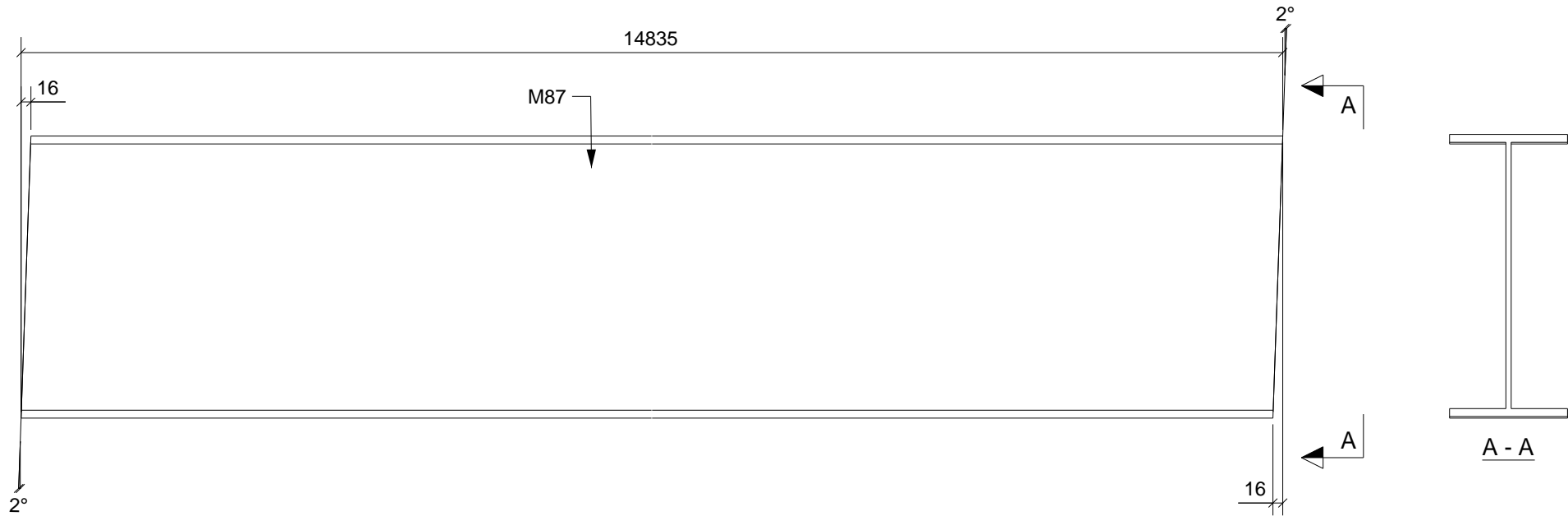
MARK	SECTION	GRADE	Qty	LENGTH	AREA M2	WEIGHT KG	DRAWING No. m5		COLUMN		
m5	SHS100*100*5.0	350	1	9507	3.60	135.08	CONTRACT:				
MATERIAL LIST FOR WORKSHOP						TOTAL	3.60	135.08	DRAWN BY:		ISSUE DATE: 04.10.2019
								REVISION No: 0	REVISION DATE: 08.10.2019		

Qty.	In Assembly
2	C7



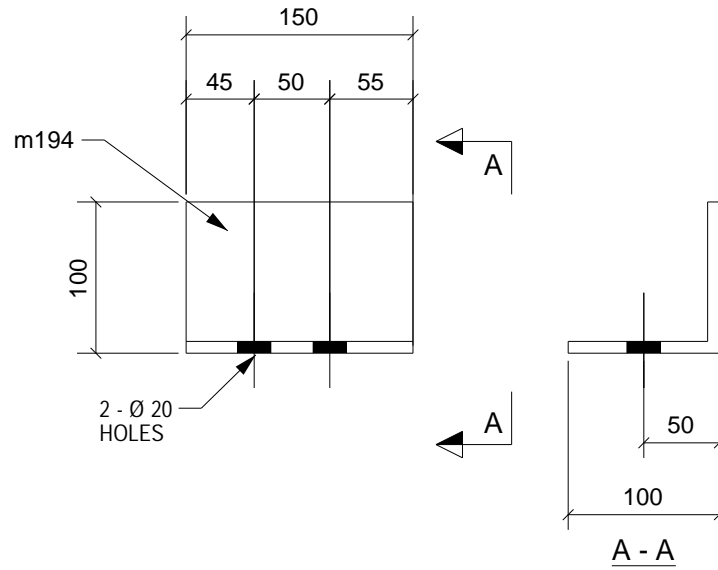
MARK	SECTION	GRADE	Qty	LENGTH	AREA M2	WEIGHT KG	DRAWING No. m7		COLUMN		
m7	SHS100*100*5.0	350	2	9174	3.48	130.35	CONTRACT:				
MATERIAL LIST FOR WORKSHOP						TOTAL	6.95	260.69	DRAWN BY:		ISSUE DATE: 04.10.2019
								REVISION No: 0	REVISION DATE: 08.10.2019		

Qty.	In Assembly
1	RF3
1	RF4



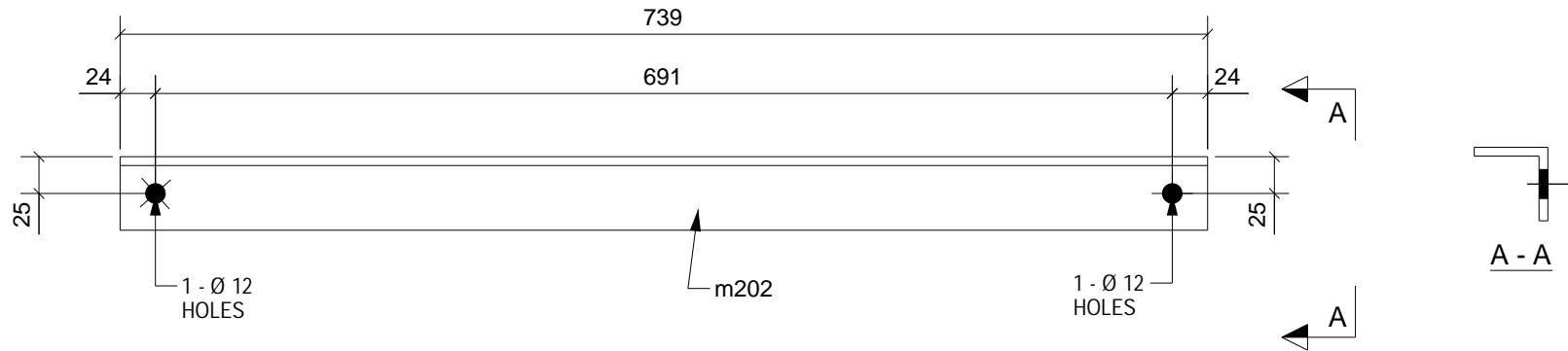
MARK	SECTION	GRADE	Qty	LENGTH	AREA M2	WEIGHT KG	DRAWING No. <b>M87</b>		RAFTER		
M87	UB460*67	300	2	14835	24.18	1000.34	CONTRACT:				
MATERIAL LIST FOR WORKSHOP				TOTAL	48.36	2000.68	DRAWN BY:		ISSUE DATE:	04.10.2019	
							REVISION No:		0	REVISION DATE:	08.10.2019

Qty.	In Assembly
1	B36



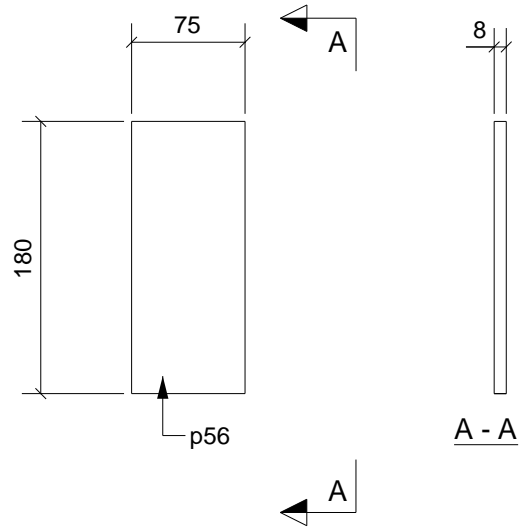
MARK	SECTION	GRADE	Qty	LENGTH	AREA M2	WEIGHT KG	DRAWING No. <b>m194</b>		BEAM		
m194	EA100*100*8	300	1	150	0.06	1.77	CONTRACT:				
MATERIAL LIST FOR WORKSHOP						TOTAL	0.06	1.77	DRAWN BY:		ISSUE DATE: 04.10.2019
								REVISION No: 0	REVISION DATE: 08.10.2019		

Qty.	In Assembly
20	FB2



MARK	SECTION	GRADE	Qty	LENGTH	AREA M2	WEIGHT KG	DRAWING No. m202		STAY	
m202	EA50*50*6	250	20	739	0.15	3.29	CONTRACT:			
MATERIAL LIST FOR WORKSHOP							TOTAL		ISSUE DATE: 04.10.2019	
							REVISION No: 0		REVISION DATE: 08.10.2019	

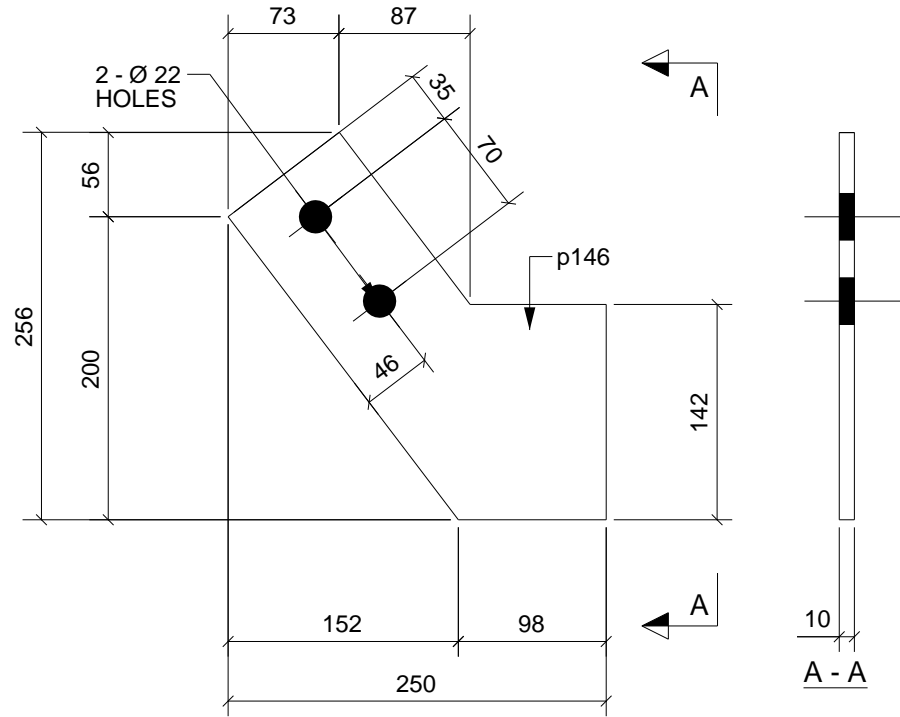
Qty.	In Assembly
1	C9



MARK	SECTION	GRADE	Qty	LENGTH	AREA M2	WEIGHT KG	DRAWING No. p56		PLATE	
p56	FL8*75	300	1	180	0.03	0.85	CONTRACT:			
MATERIAL LIST FOR WORKSHOP					TOTAL		0.03	0.85	DRAWN BY:	
							0	REVISION No:		04.10.2019
								REVISION DATE:		08.10.2019

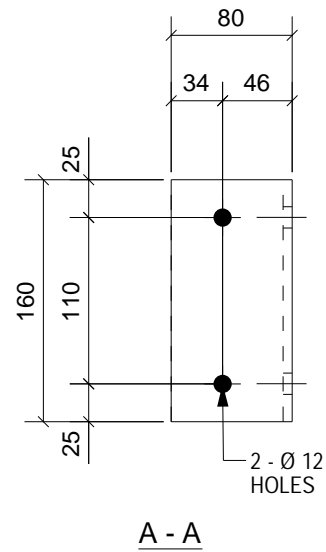
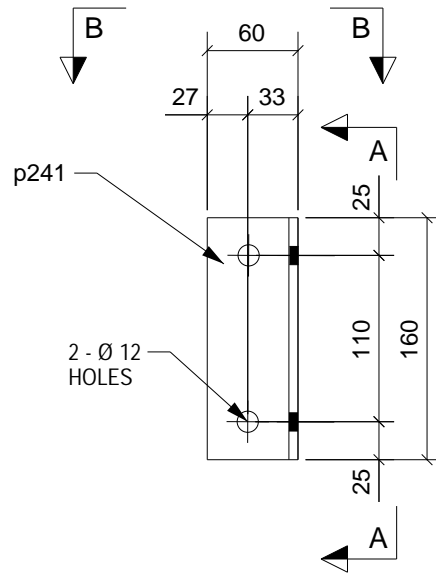
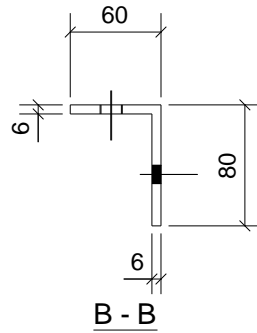


Qty.	In Assembly
1	C3



MARK	SECTION	GRADE	Qty	LENGTH	AREA M2	WEIGHT KG	DRAWING No. p146		PLATE	
p146	FL10*250	300	1	256	0.07	2.48	CONTRACT:			
MATERIAL LIST FOR WORKSHOP					TOTAL		0.07	2.48	DRAWN BY:	
							0	REVISION No:		0
									ISSUE DATE:	04.10.2019
									REVISION DATE:	08.10.2019

Qty.	In Assembly
8	PU1



MARK	SECTION	GRADE	Qty	LENGTH	AREA M2	WEIGHT KG	DRAWING No. p241		PLATE		
p241	FPL6*134	250	8	160	0.05	1.01	CONTRACT:				
MATERIAL LIST FOR WORKSHOP						TOTAL	0.37	8.08	DRAWN BY:		ISSUE DATE: 04.10.2019
								REVISION No: 0	REVISION DATE: 08.10.2019		